

Monthly Climatological Report of November 2021 in Tunisia

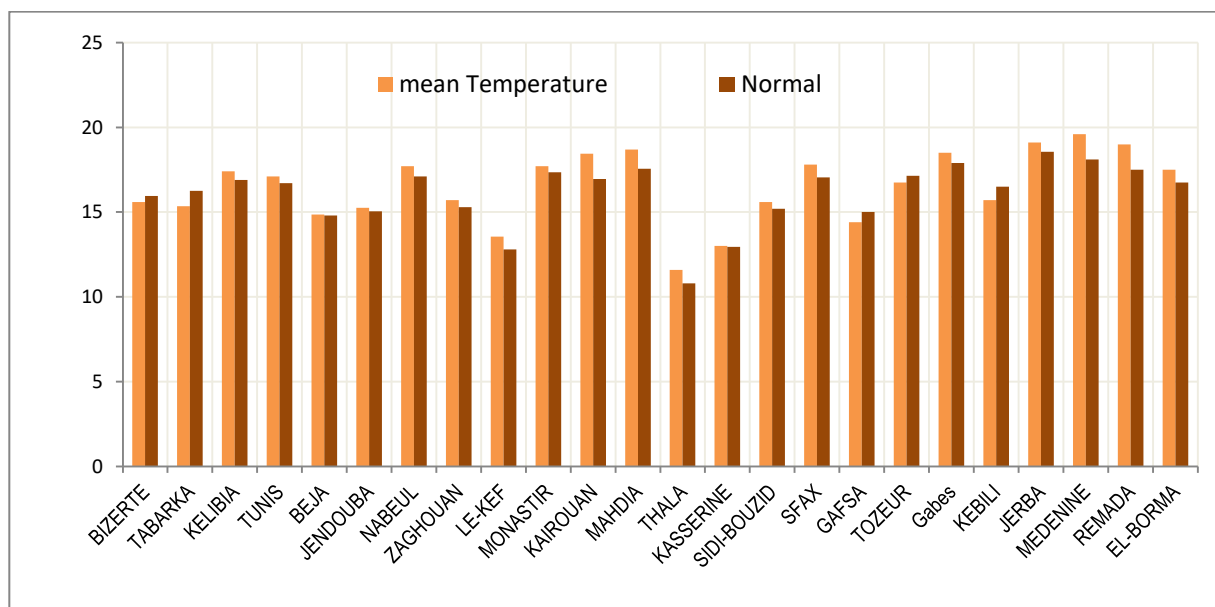
The month of November 2021 was characterized by a relative increase in temperatures, the general average temperature (24 main stations) was slightly higher than the reference average of the same stations (1981-2010) with a difference of (+0.4°C).

Regarding rainfall, November of this year shows a deficit of 50% compared to monthly rainfall normal. This ranks November 2021 among the driest November since 1950.

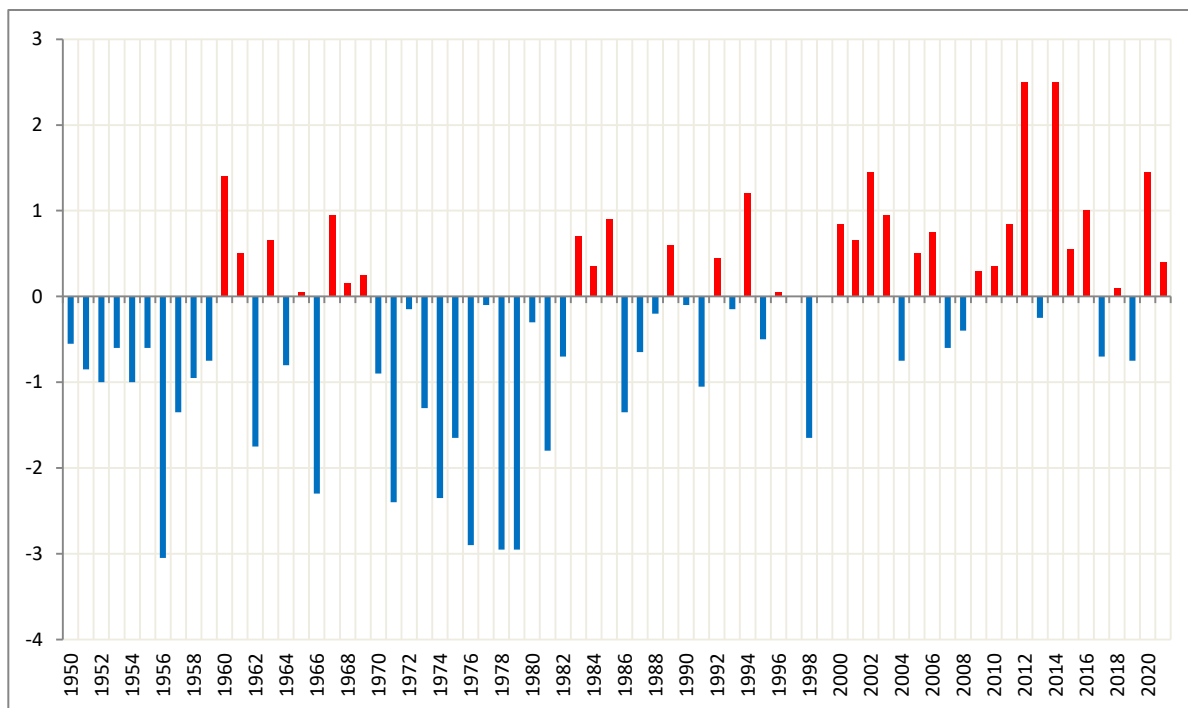
Mean temperature :

The monthly mean temperatures ranged from 11.6 ° C in Thala to 19.6 ° C in Medenine.

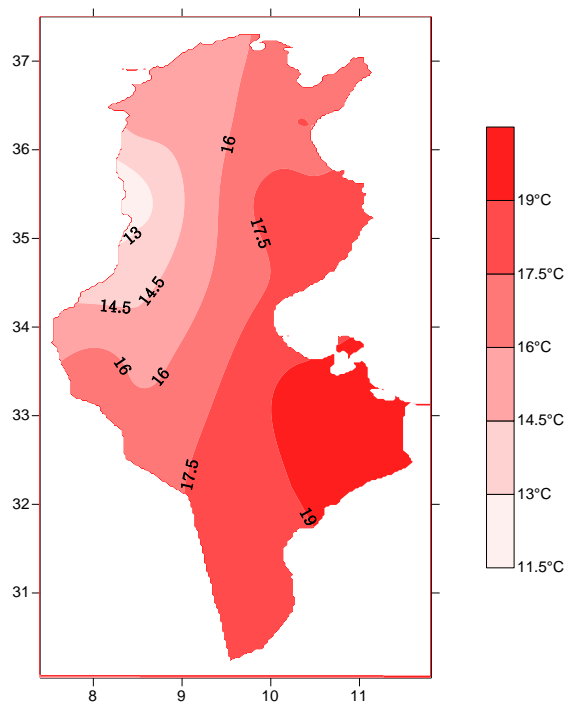
The mean temperature over the whole of Tunisia was 16.5 ° C and it was above normal (16.1°C) with a difference of (+ 0.4°C).



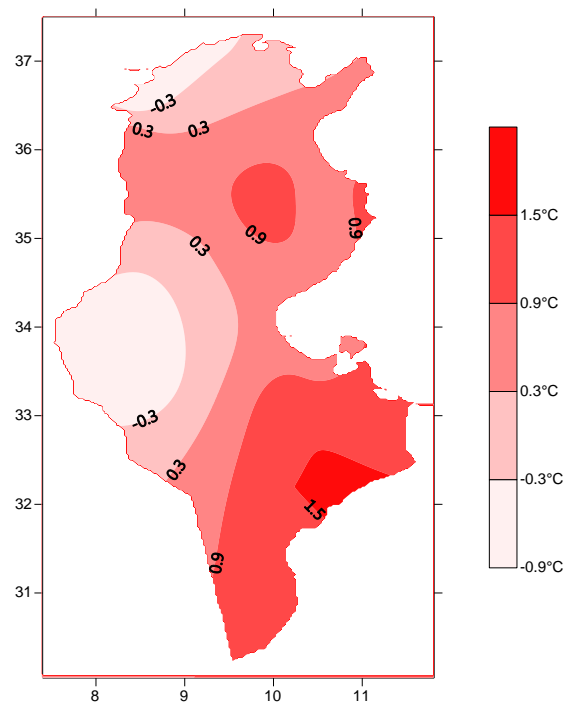
Comparison of mean temperatures (November 2021) to normals for the month of November



**Deviation from normal (1981-2010) of mean temperatures for the months of November
for the years 1950 to 2021**



Average temperature (°C)

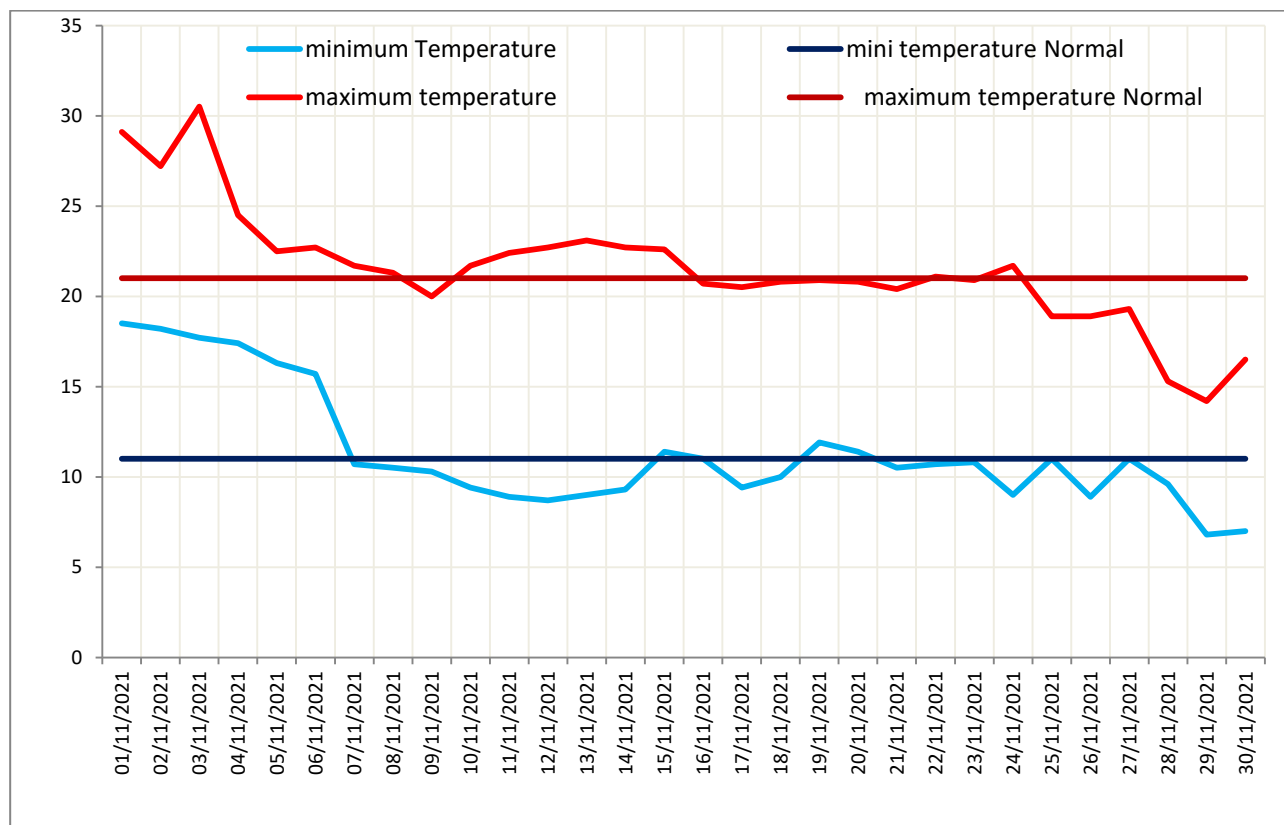


Deviation from the normal of Tmean (°C)

Daily evolution of temperature:

At the start of the first week of November 2021, the temperature was warm compared to the benchmark averages, especially on the third day of the month, when most areas experienced a remarkable rise and we set new temperature records maximum: **32.1 ° C in Zaghouan** (30.5 ° C on 11/14/1996) and **30.3 ° C in Kef** (30.2 ° C on 11/05/2012) and **32.4 ° C in Monastir** (31.7 ° C on 11/04/1998).

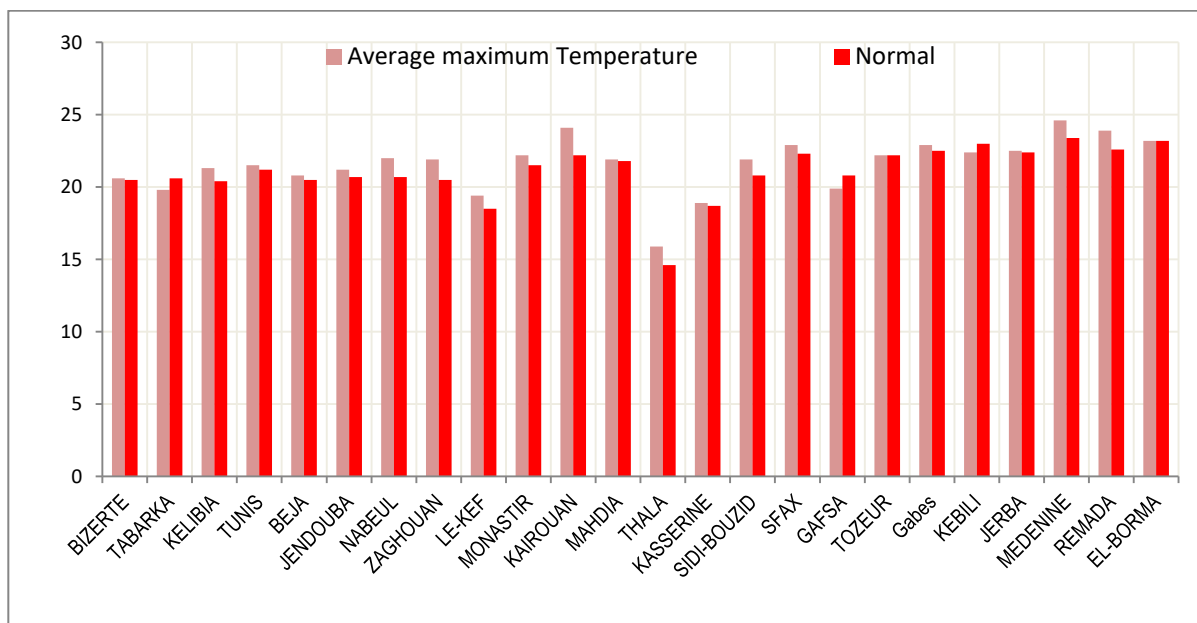
For the remainder of the month, temperatures were generally around benchmark averages, with the exception of the last week of the month, when most areas experienced a noticeable drop in temperatures.



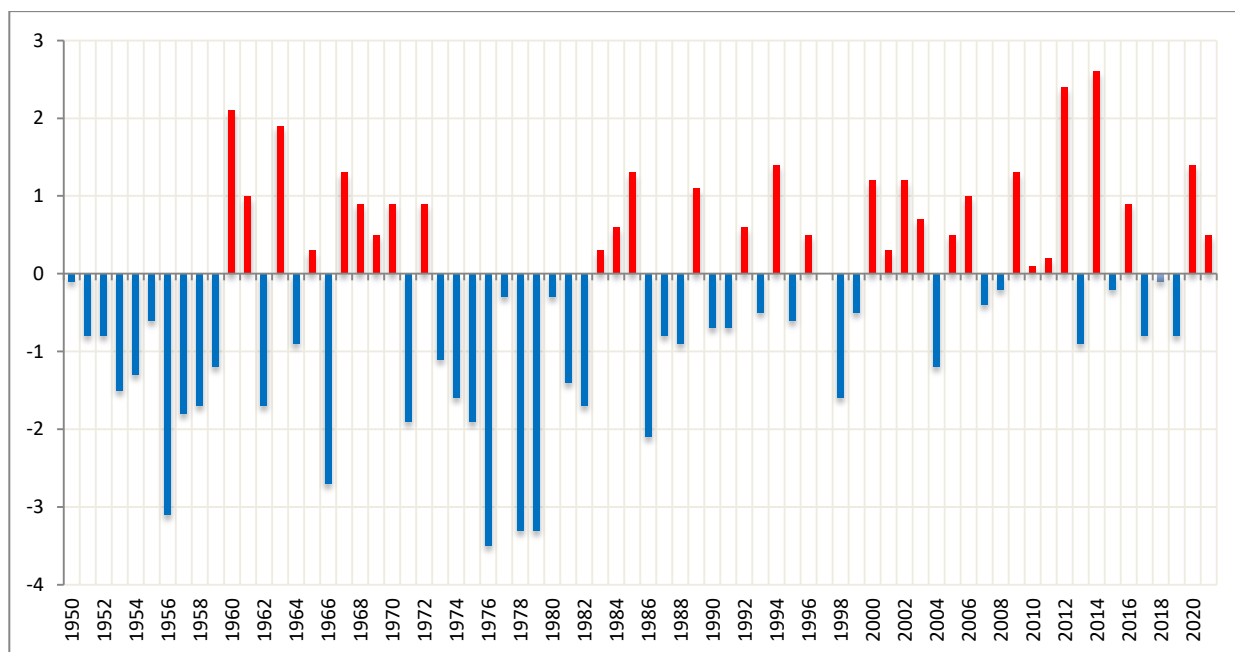
Daily temperature evolution in Tunisia compared to the normal for the month of November

Maximum temperature :

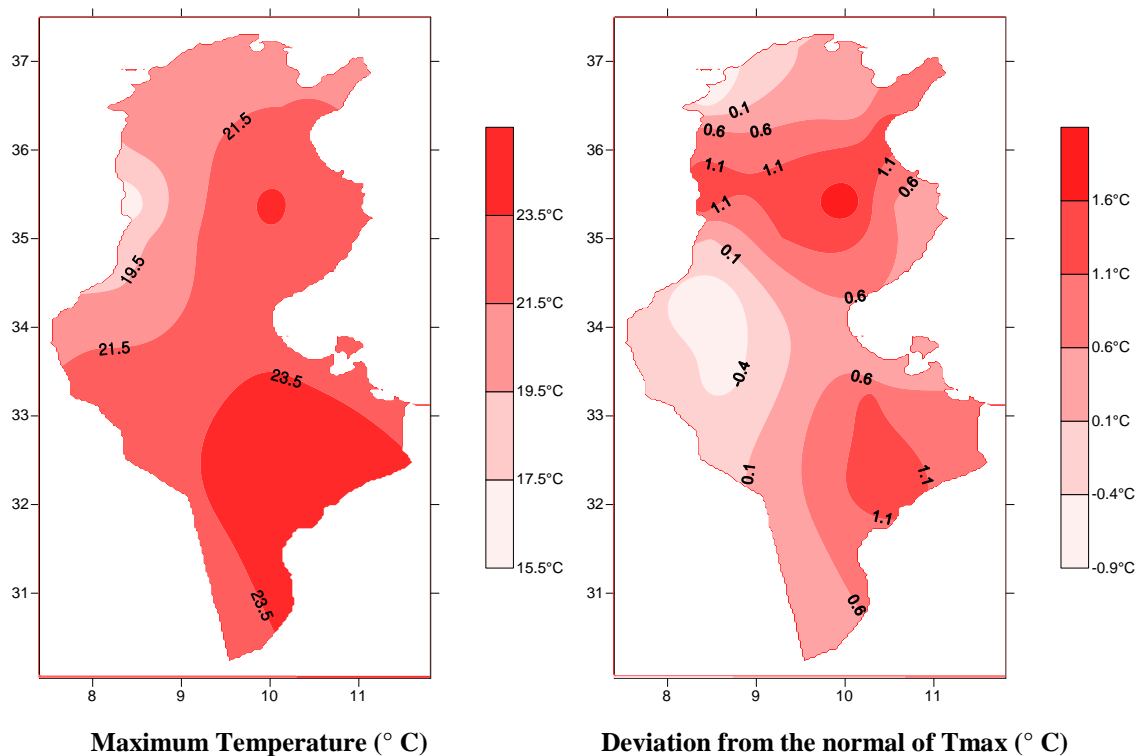
Maximum temperatures varied between 15.9°C in Thala and 24.6°C in Medenine. The average over all of Tunisia reached 21.6°C (24 main stations) and it exceeded the reference average of the same stations with a difference of (+ 0.5°C).



Comparison of maximum temperatures (November 2021) to normals for the month of November

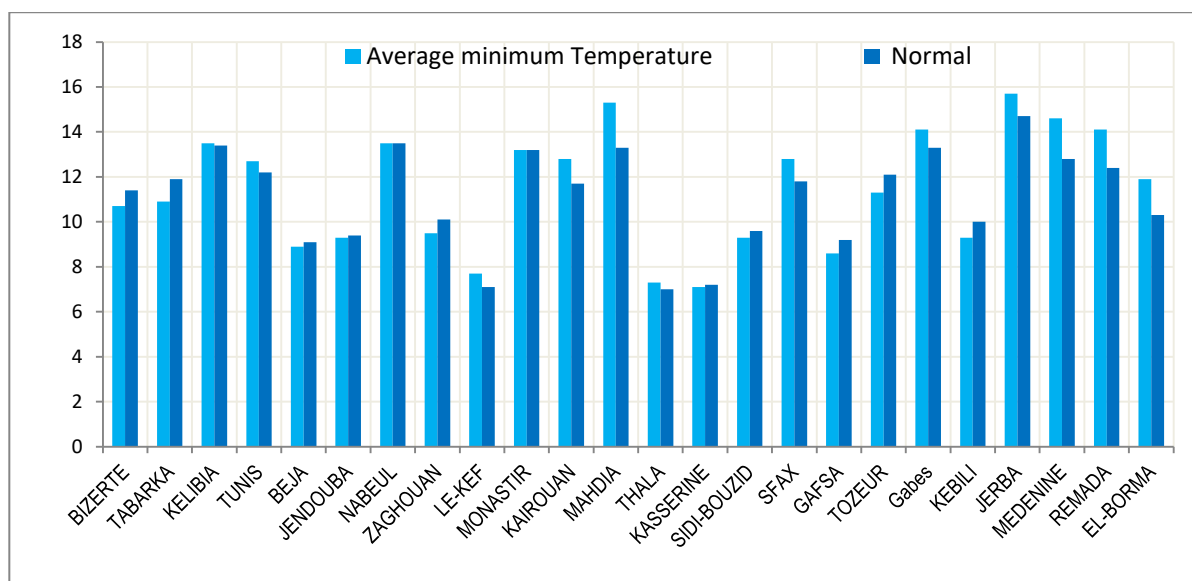


Deviation from the normal (1981-2010) of the maximum temperatures of the months of November
for the years 1950 to 2021

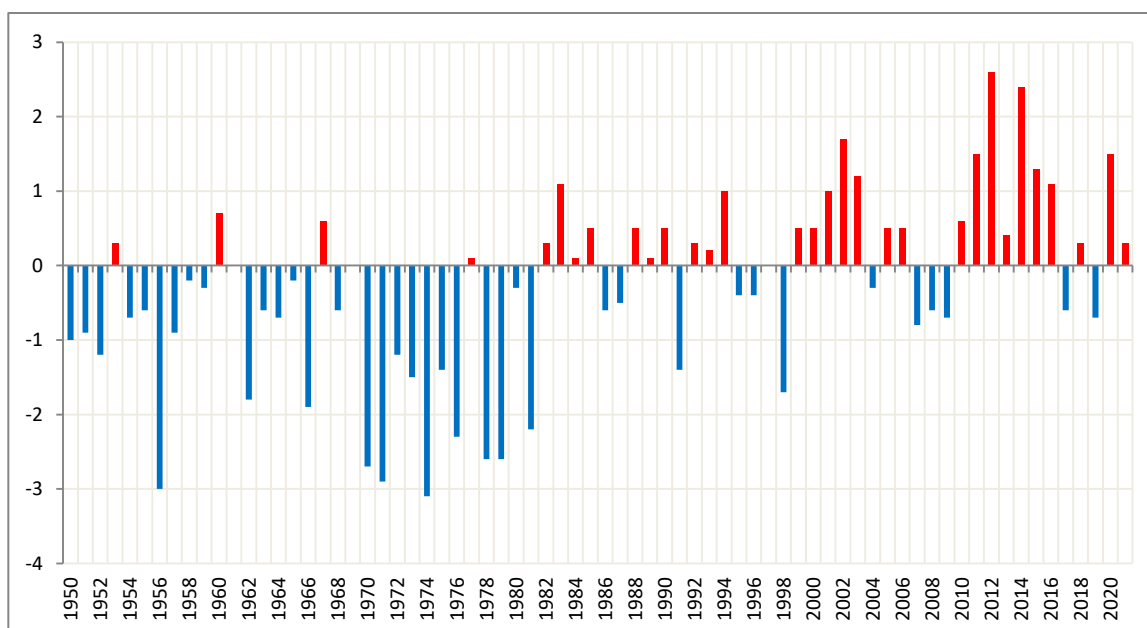


Minimum temperature :

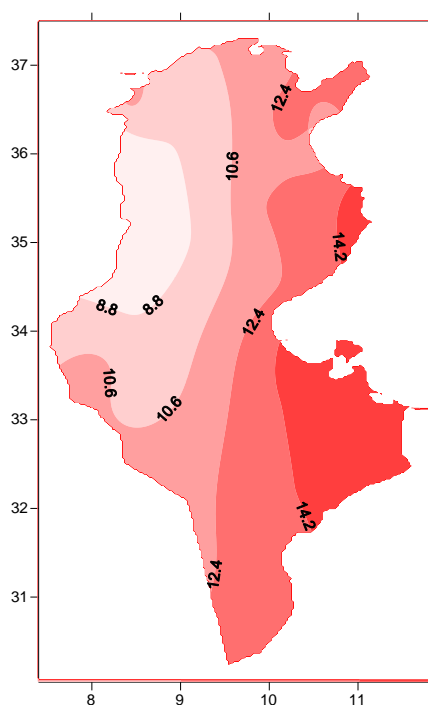
The monthly average minimum temperatures of November ranged between 7.1 ° C in Kasserine and 15.7 ° C in Jerba, and the global average of the 24 main stations (11.4 ° C) was above the global normal (11.1 ° C) with a difference of (+ 0.3 ° C).



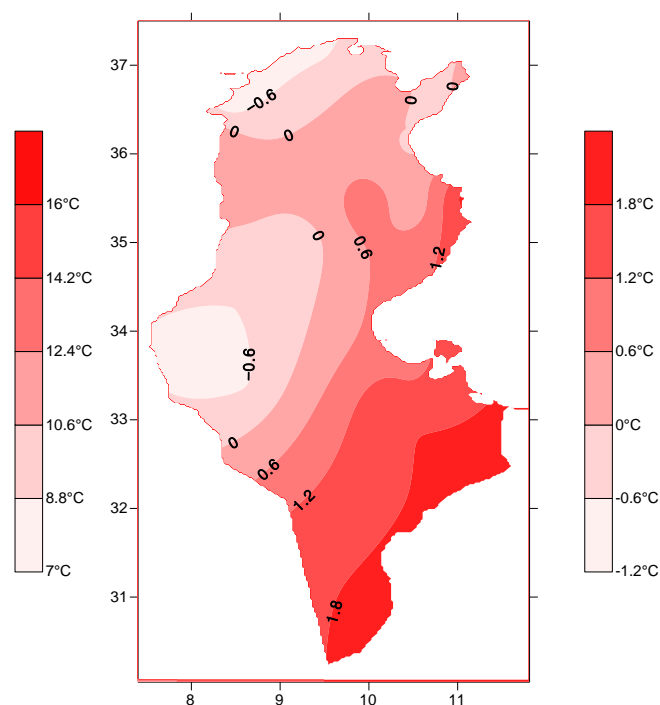
Comparison of minimum temperatures (November 2021) to normals of November



**Deviation from normal (1981-2010) of minimum temperatures of the months of November
for the years (1950 to 2021)**



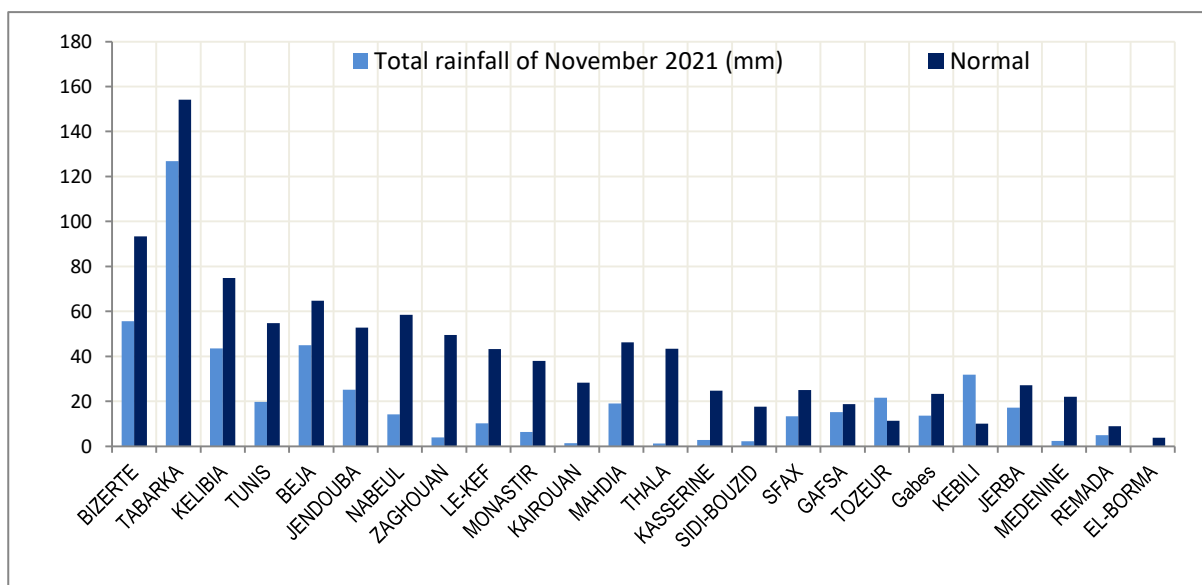
Minimum Temperature (° C)



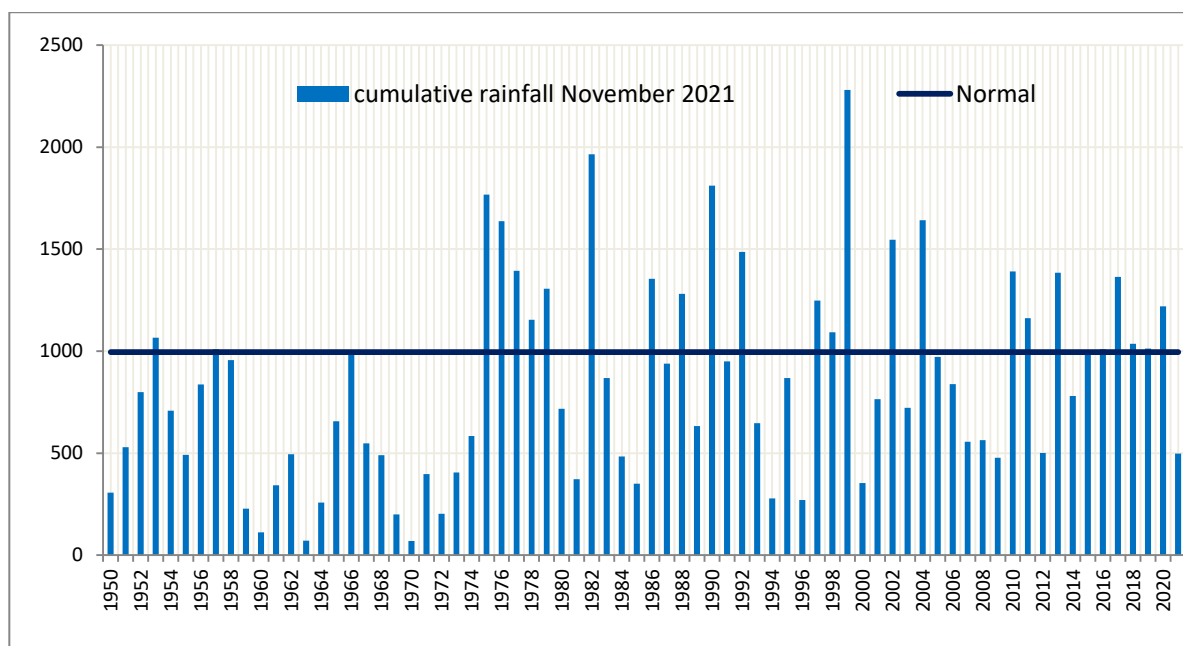
Deviation from normal of Tmin in (° C)

Rainfall:

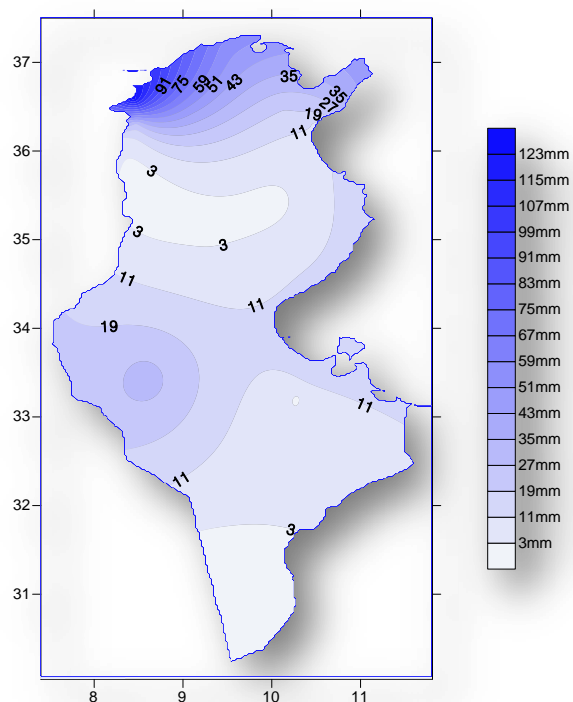
Regarding rainfall, November 2021 was in deficit. The cumulative rainfall for the month was 497.5 mm, while the cumulative normal for the same stations is 994.8 mm, which represents a deficit of 50%. This lack of precipitation varied from one station to another with the exception of Tozeur and Kebili where we respectively exceeded normal. November of this year is ranked among the driest November.



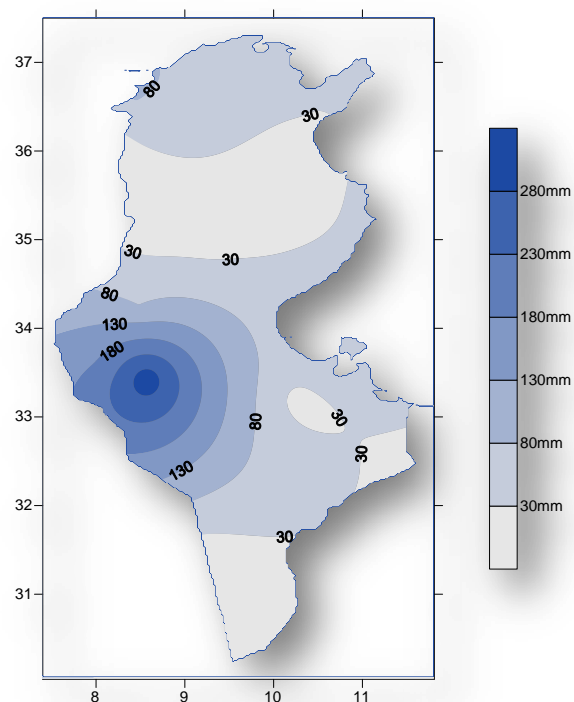
**Comparison of monthly precipitation totals with the reference averages
of the accumulations**



**Monthly rainfall in the main stations for the months of November
for the years 1950 to 2021**



Monthly rainfall in November 2021 (mm)



Ratio to normal (%)

The winds :

As for the winds, they were generally weak to moderate, and their speed increased during the period from 27 to 29 November 2021 over most regions, where the maximum speed varied from 60 km / h at Medenine to 86 km / h at Nabeul and peaks were reached on November 29, 97 km / h in Bizerte, 101 km / h in Tabarka and 104 km / h in Thala (figures V ° 1 and V ° 2) :

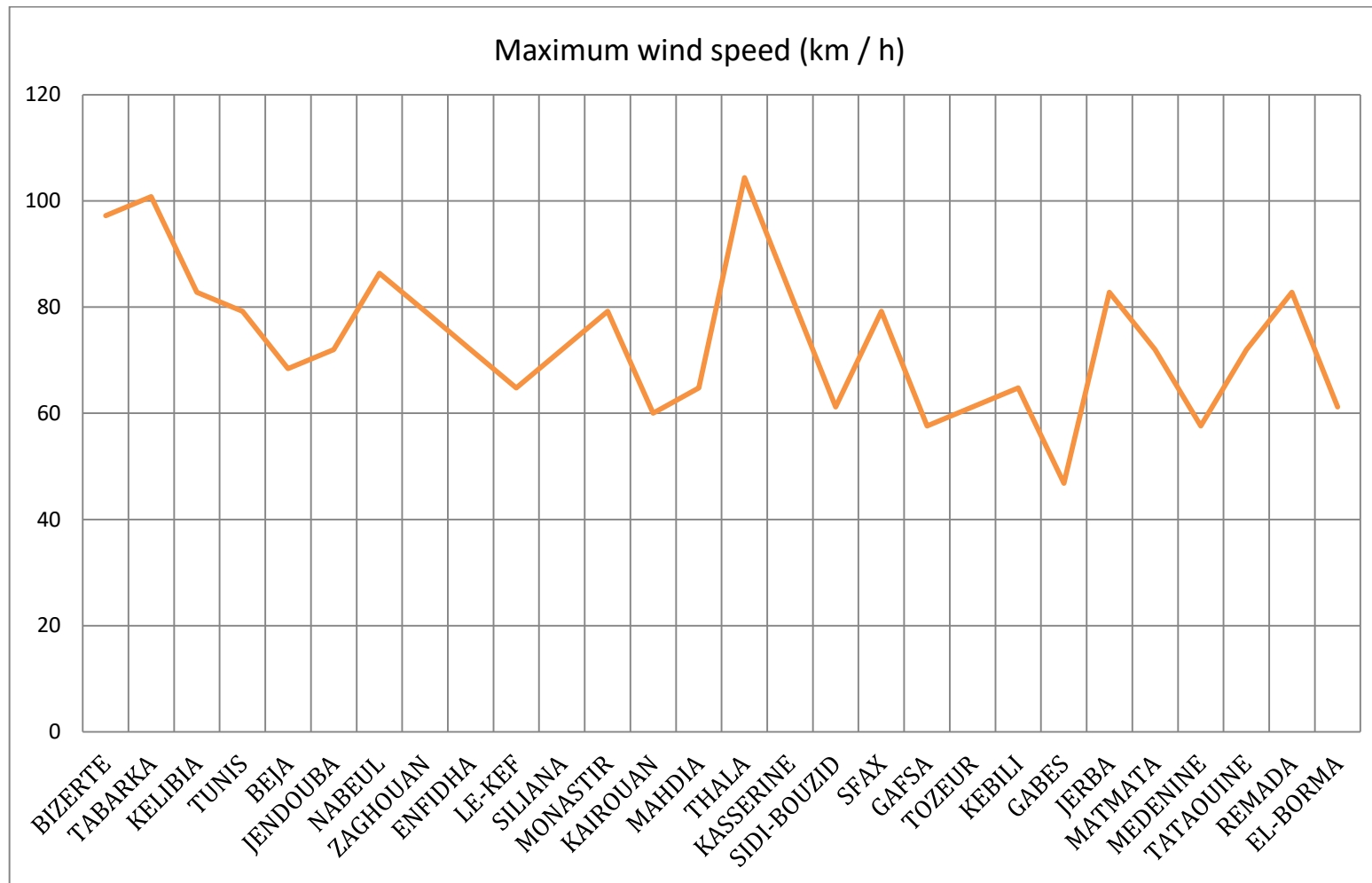


Fig. V°1

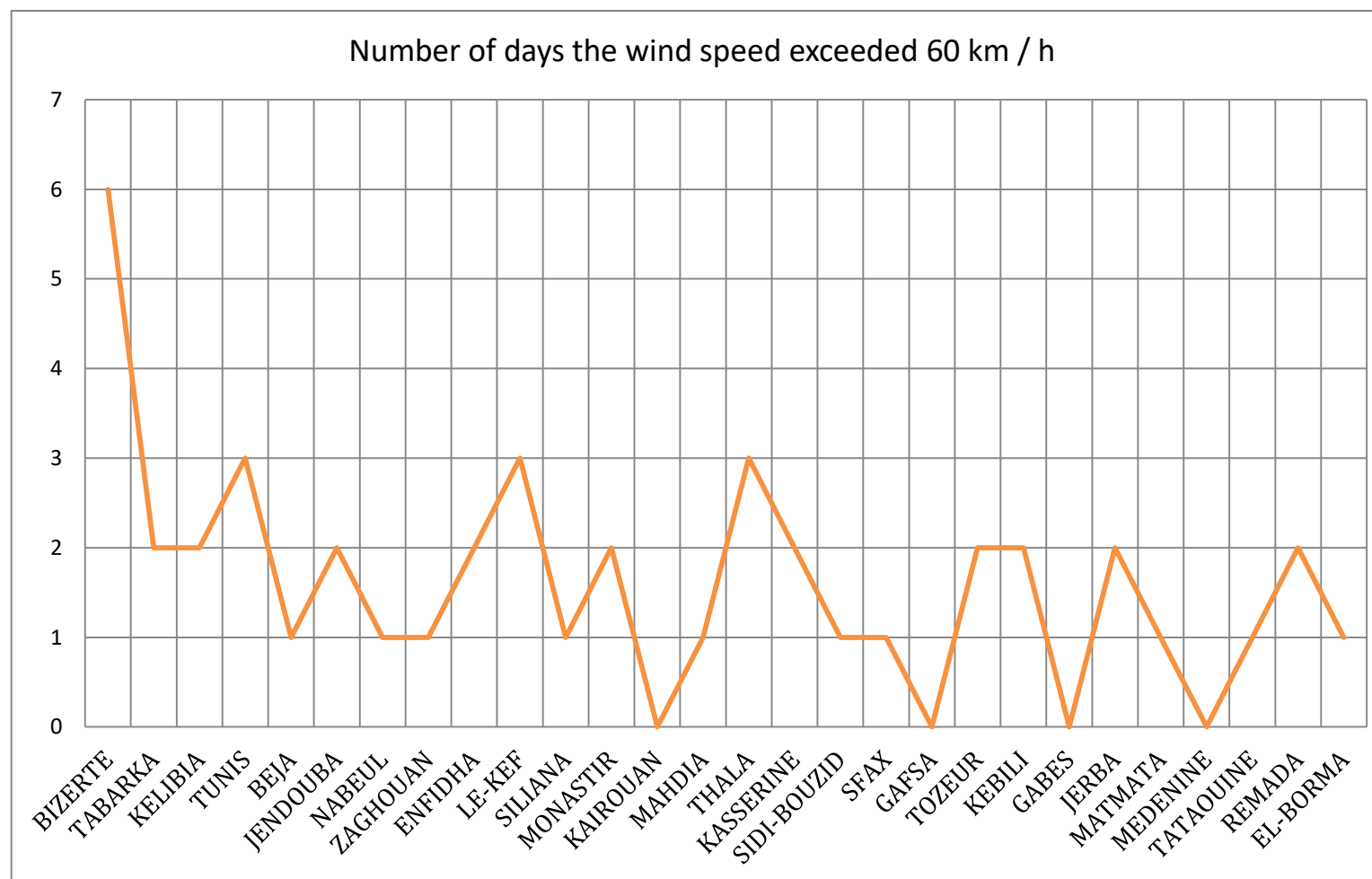


Fig. V°2