

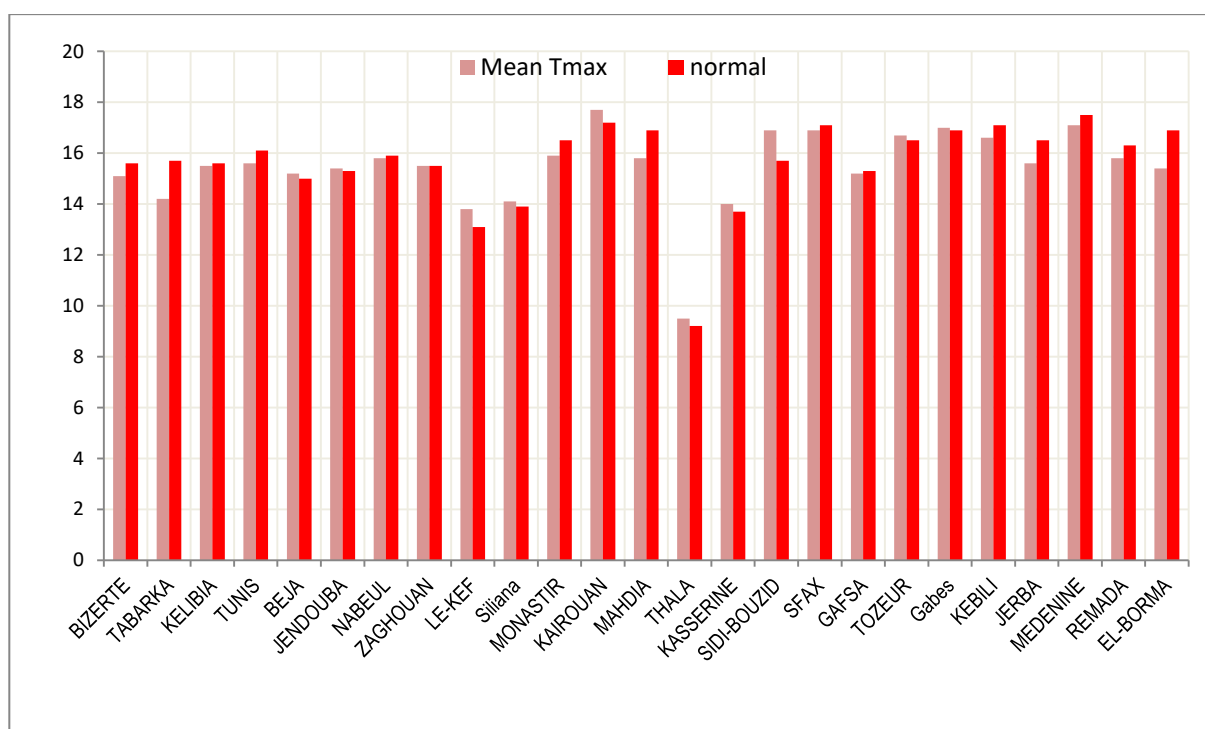
## Monthly Climatological Report\_January 2022 in Tunisia

January 2022 was marked by a relative drop in temperature. Indeed, the general average (25 main stations) of the average temperature was 10.4°C and it was lower than the reference average (10.9°C) with a difference of (- 0.5)°C .

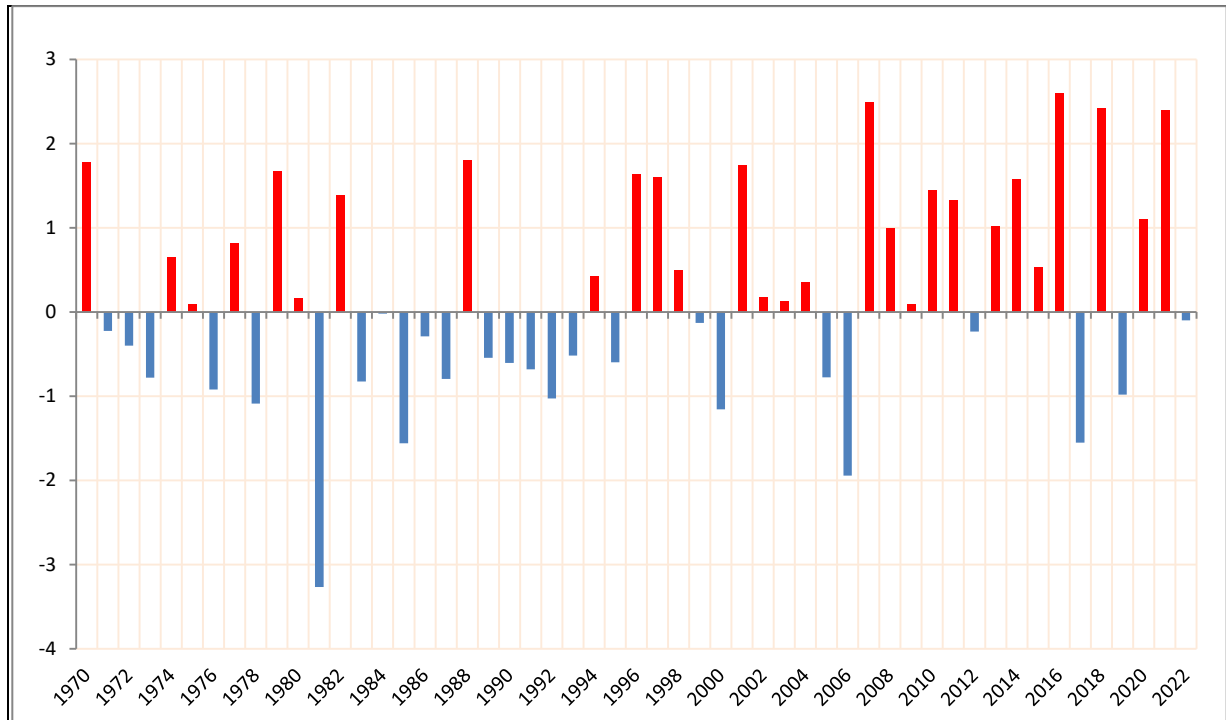
Regarding rainfall, the monthly accumulation (25 main stations) was 826.1 mm, while the reference accumulation (1981-2010) for the same stations was 1187.5 mm and therefore the deficit was 30%.

### Maximum temperature:

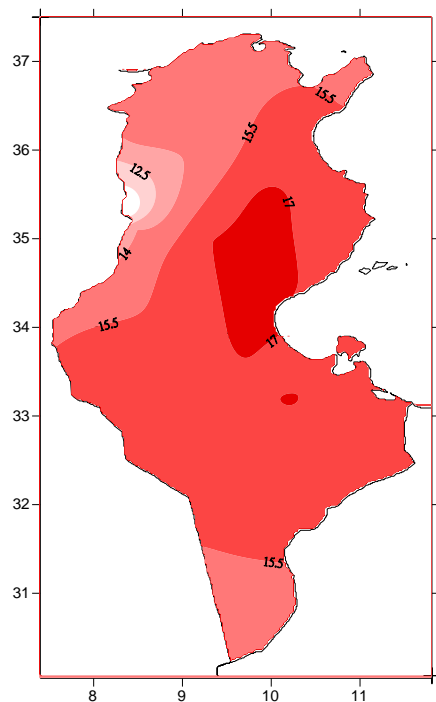
The maximum temperatures varied between 9.5°C in Thala and 17.7°C in Kairouan and they were lower than the reference averages over the extreme North and South of the country where the difference varied from (-0.1) °C in Gafsa to (-1.5) °C in Tabarka and El-Borma and they were close to the reference averages in the other regions. Note that the absolute maximum temperature reached 26.9°C in Sidi Bouzid on January 3, 2022. As for the general average maximum temperature, it reached 15.5°C and was very close to normal (15.°C).



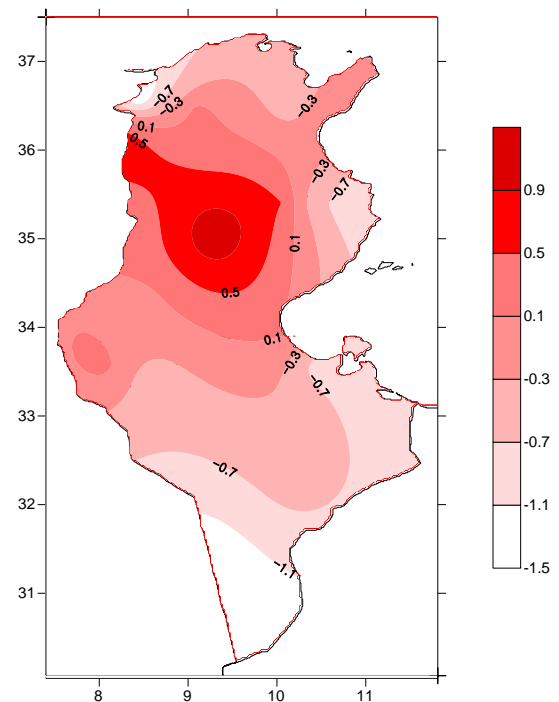
**Comparison of maximum temperatures (January 2022) to normal of the January (1981-2010)**



Deviation from normal (1981-2010) of mean temperatures of January  
for the years 1970 to 2022



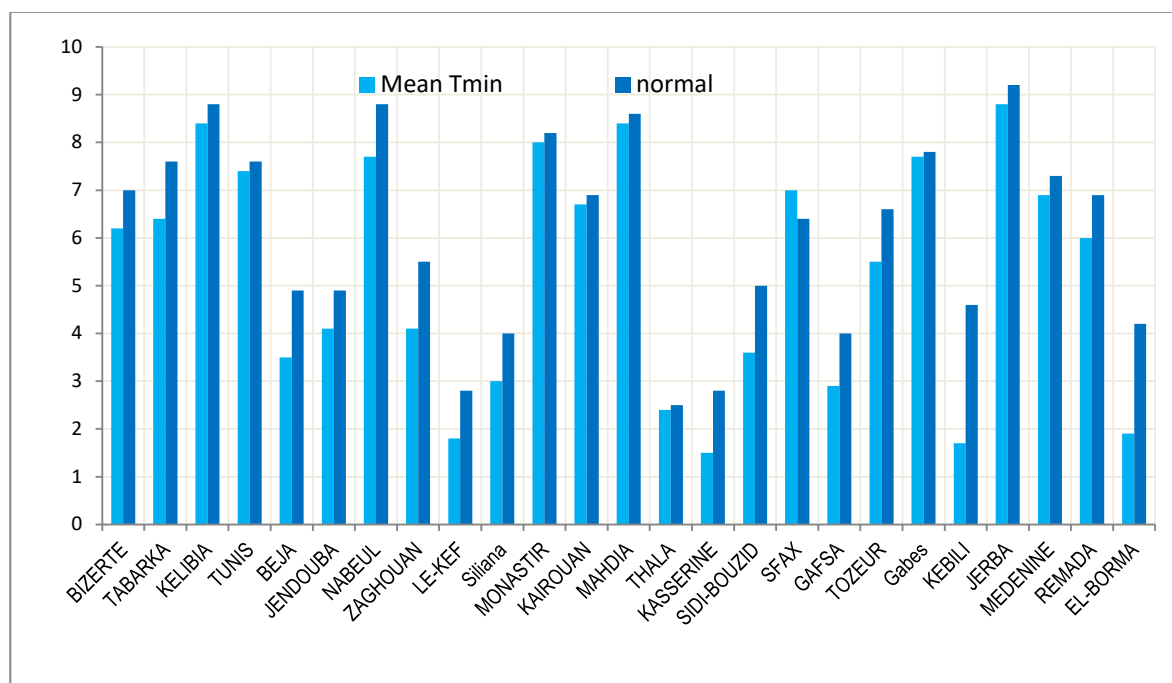
Average of the mean Temperature ( $^{\circ}$  C)



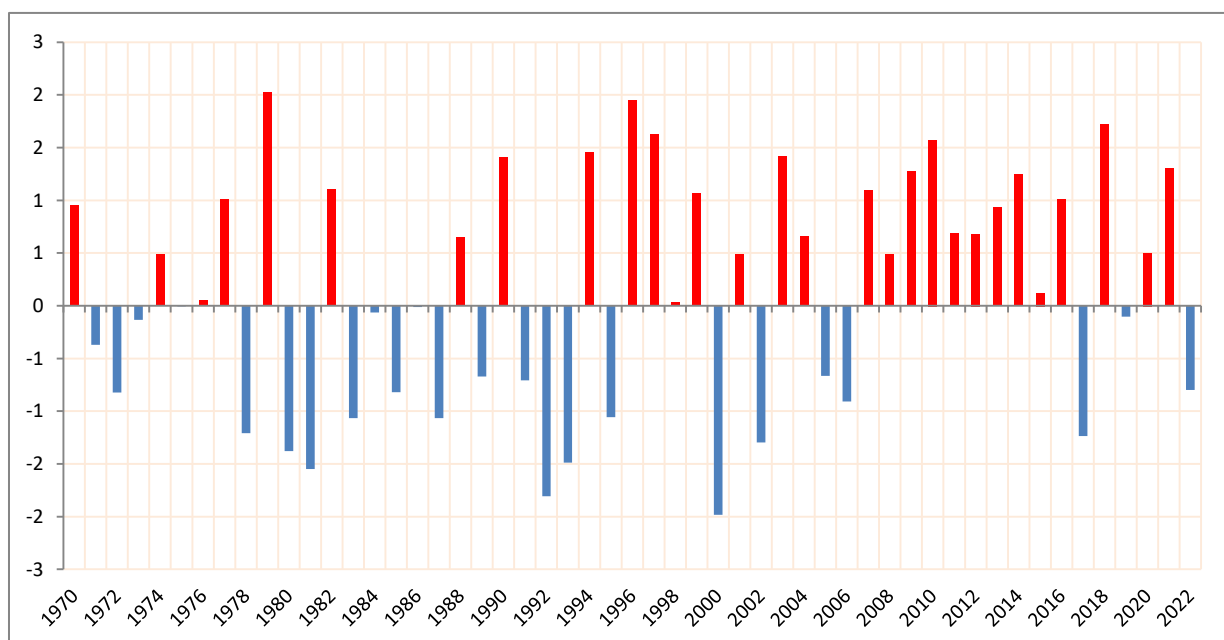
Deviation from the normal of mean Temperature ( $^{\circ}$  C)

### Minimum temperature :

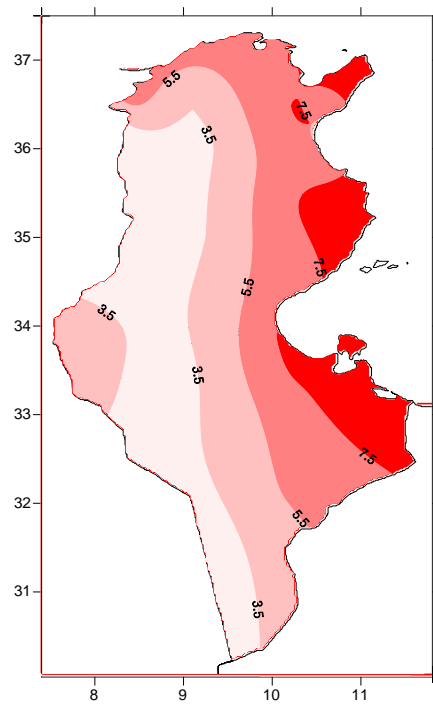
Minimum temperatures in January ( $5.3^{\circ}\text{C}$ ) were lower than normal ( $6.1^{\circ}\text{C}$ ). They vary between  $1.5^{\circ}\text{C}$  in Kasserine and  $8.5^{\circ}\text{C}$  in Djerba. On average throughout Tunisia, the deviation from normal is  $(-0.8)^{\circ}\text{C}$ .



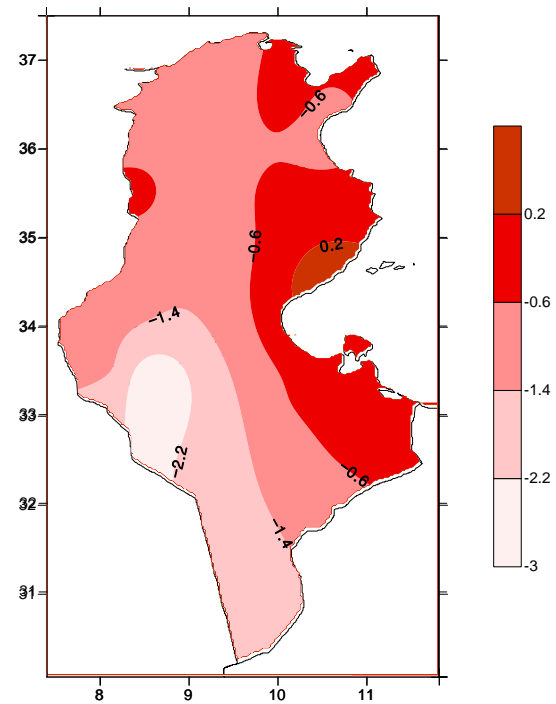
**Comparison of minimum temperatures (January 2022) to normals of January (1981-2010)**



**Deviation from the normal (1981-2010) of the maximum temperatures of January  
for the years 1970 to 2022**



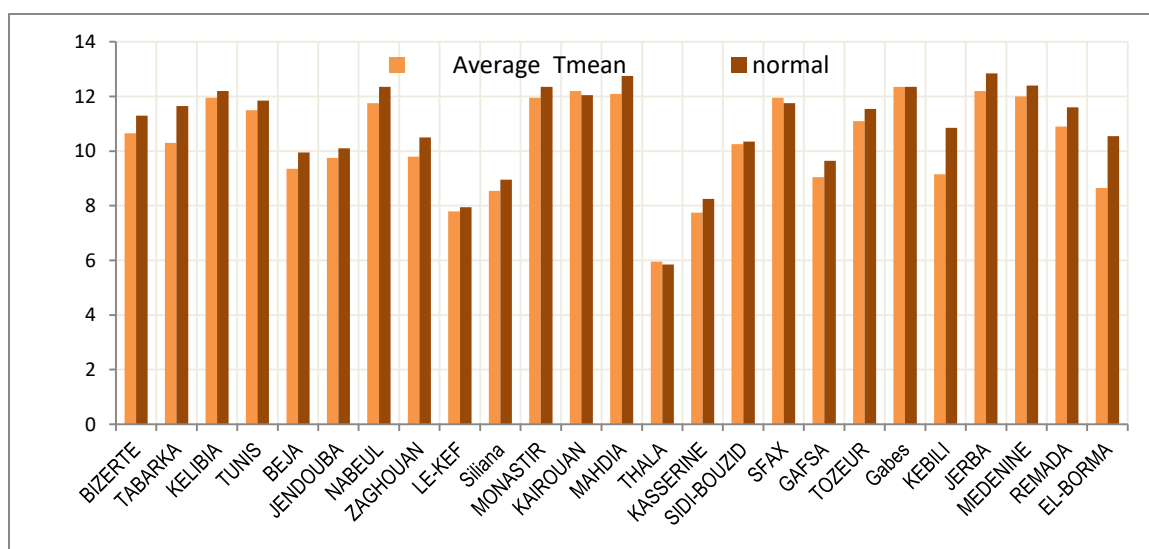
Minimum Temperature (° C)



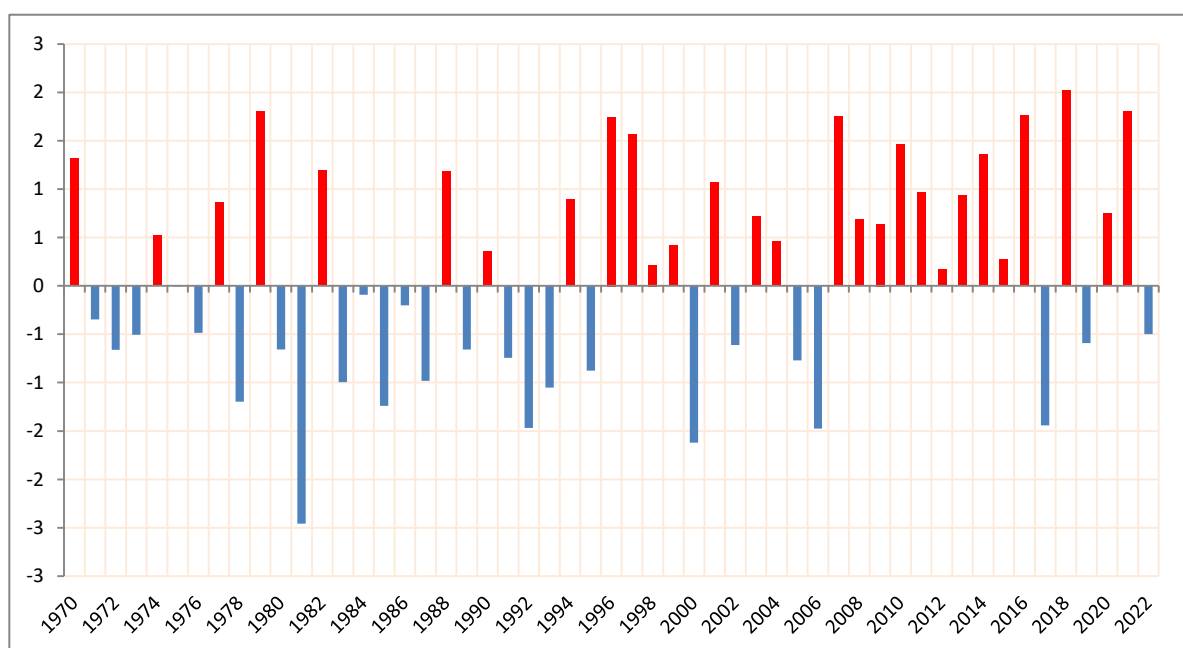
Deviation from normal of Tmin (° C)

### - Mean temperature :

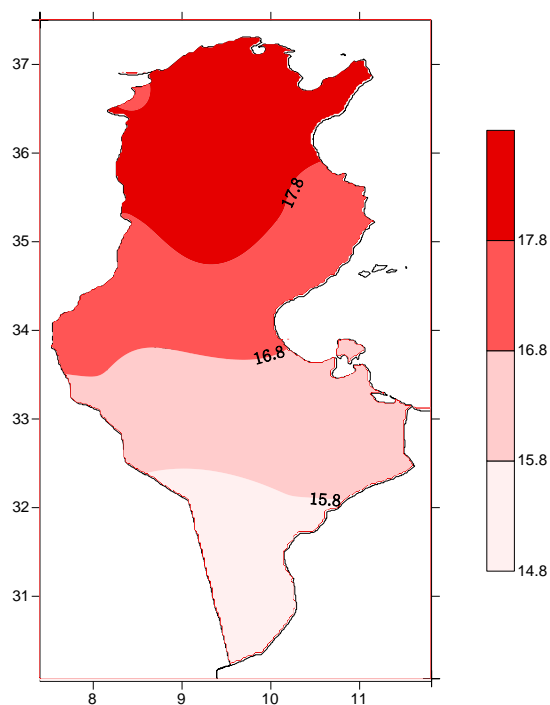
The average temperatures varied between 6°C in Thala and 12.4°C in Gabès and they were lower than the reference averages in most regions and the differences were between (-0.1)°C in Kef and Kasserine and (-1.7)°C in El-Borma. As for the general average of the average temperature, it reached 10.4°C and it was lower than the reference average (10.9°C) with a deviation of (-0.5)°C.



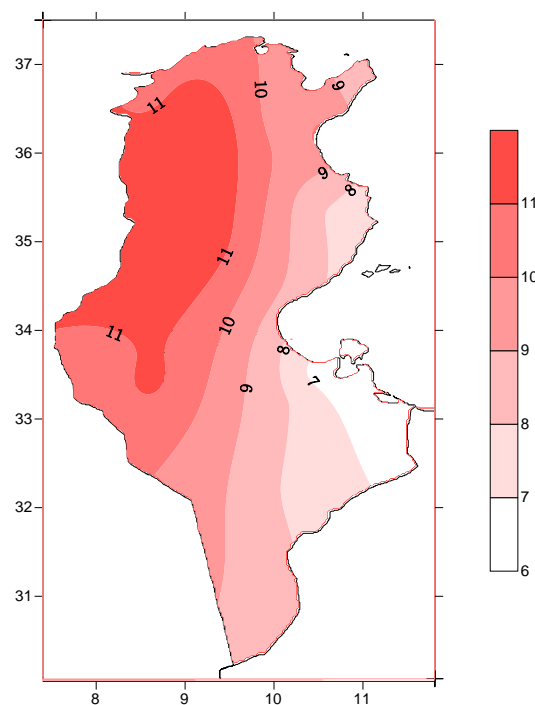
Comparison of mean temperatures (January 2022) to normals of January (1981-2010)



**Deviation from the normal (1981-2010) of the maximum temperatures of January  
for the years 1970 to 2022**



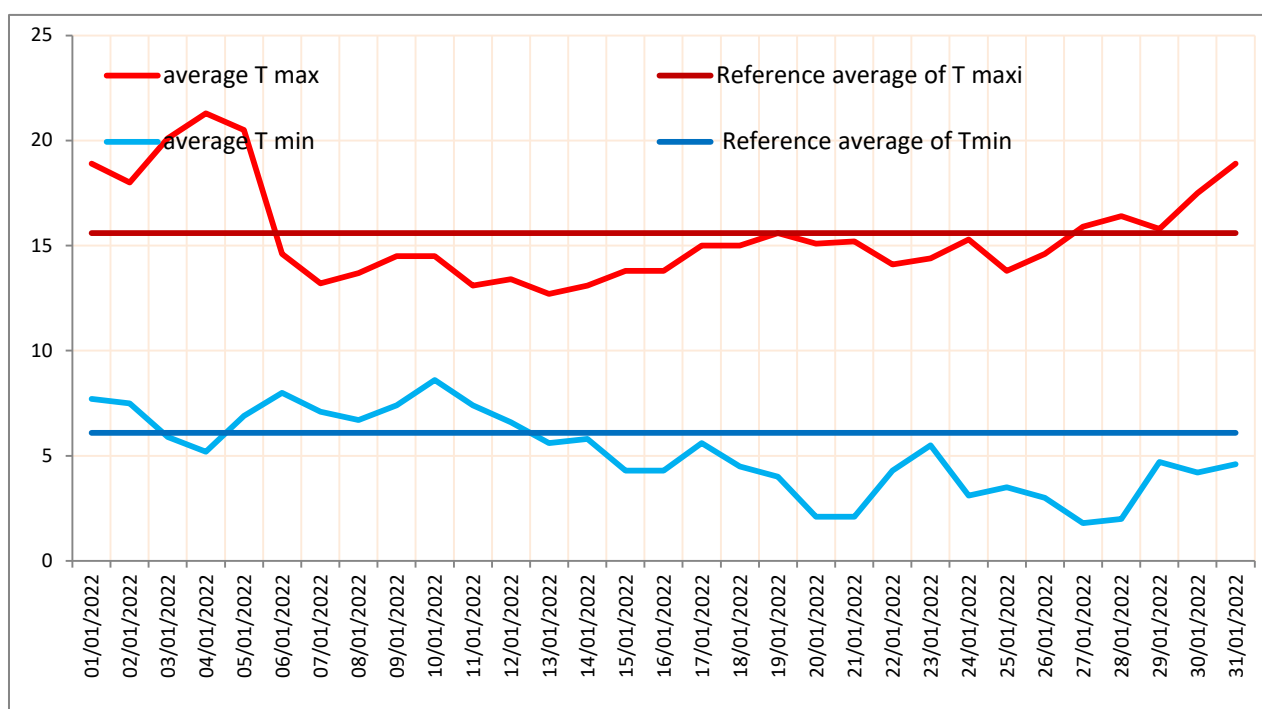
**Average of mean temperature (°C)**



**Deviation from normal of mean Temperature**

## - Daily evolution of temperature:

In continuity with the last week of 2021, characterized by a relatively high temperature, during the first week of January 2022 the temperature was high and it was higher than normal of the month, then the maximum temperature fell, while the minimum temperature remained above the averages until January 13, then it fell below the level of the reference average just like the maximum temperature until the last days of January 2022.

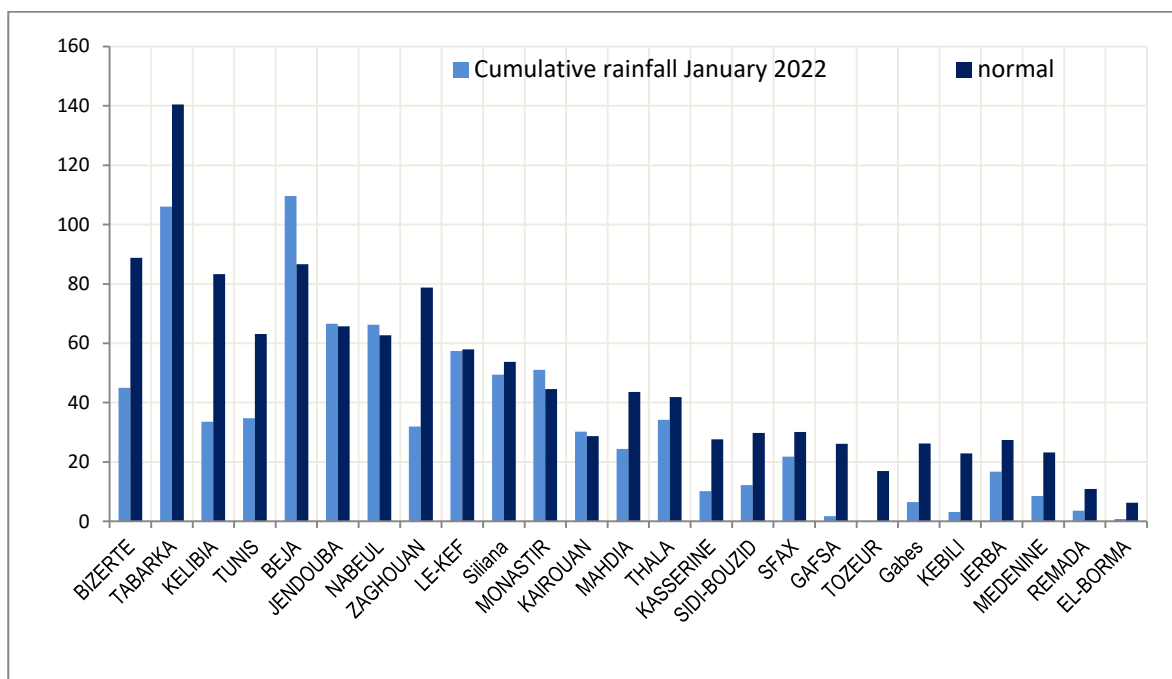


Daily temperature evolution in Tunisia compared to the normal of January (1981-2010)

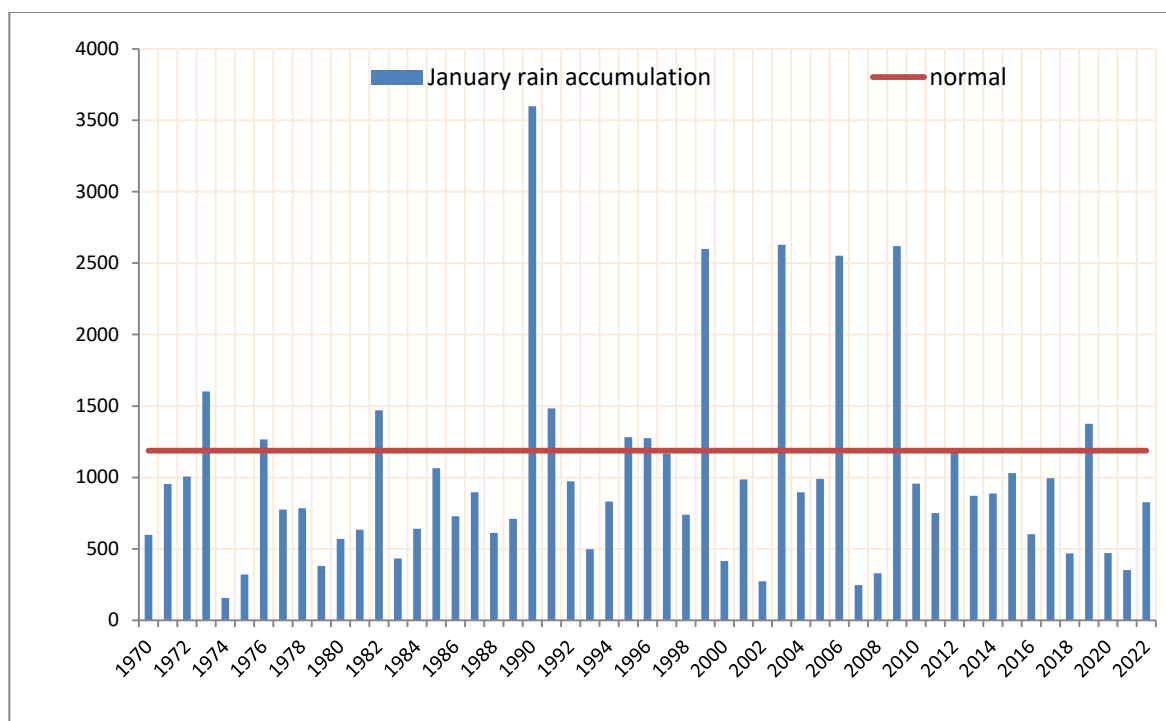
## - Rainfall :

Regarding the January 2022 rainfall, there was a deficit. Indeed the monthly accumulation (25 main stations) reached 826.1 millimeters, while the reference accumulation for the same stations was 1187.5 millimeters and consequently the deficit was 30%.

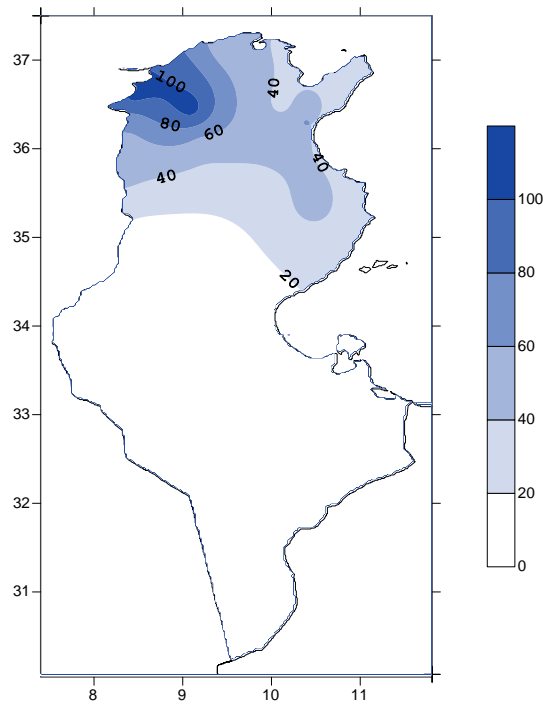
It should be noted that rainfall was normal in the North-West regions of the country, as well as the Center-East, particularly in Kairouan and Monastir. However, in the rest of the country, rains were rare and scanty, even almost absent in Gafsa and Tozeur, where the deficit varied from 93% in Gafsa to 100% in Tozeur.



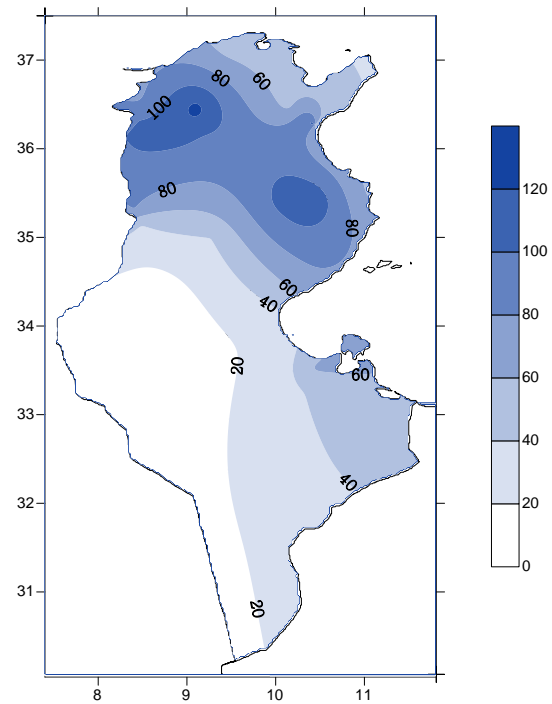
**Comparison of Monthly Rainfall ( January 2022) with the reference averages  
of the accumulations (1981-2010)**



**Monthly rainfall in the main stations for the months of January  
for the years 1970 to 2022**



Monthly rainfall January 2022 (mm)



Ratio to normal (%)

#### - The winds :

As for the winds, they were generally light to moderate, and their speed increased during the period from January 08 to 12, 2022 in most regions, where the maximum speed varied from 54 km / h in Kebili to 86 km / h in Tabarka and the winds were strong to violent on January 08, reaching a maximum of 112 km/h in Kasserine and 90 km/h in Thala.

The wind speed also increased on January 31 in the Cap Bon region where the maximum speed reached 79 km/h in Nabeul and 83 km/h in Kelibia.

(figure n° 01 and figure n° 02) :



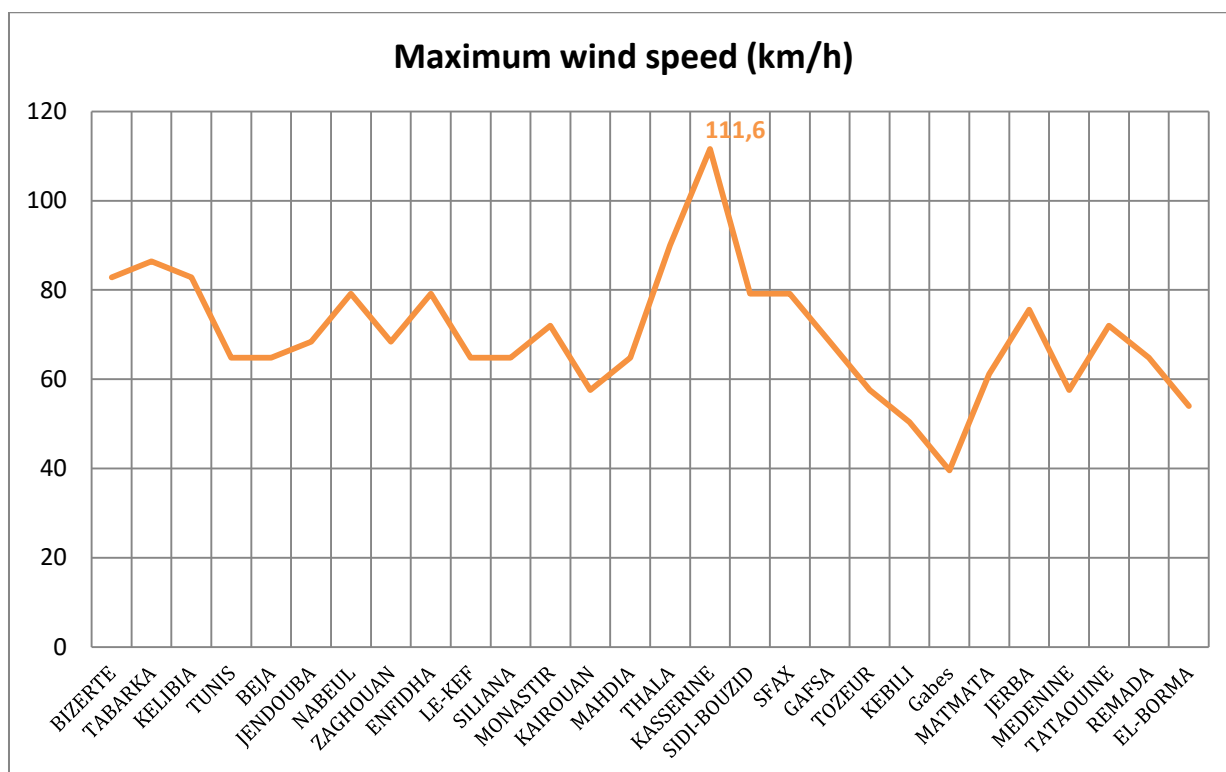


Fig. N°1

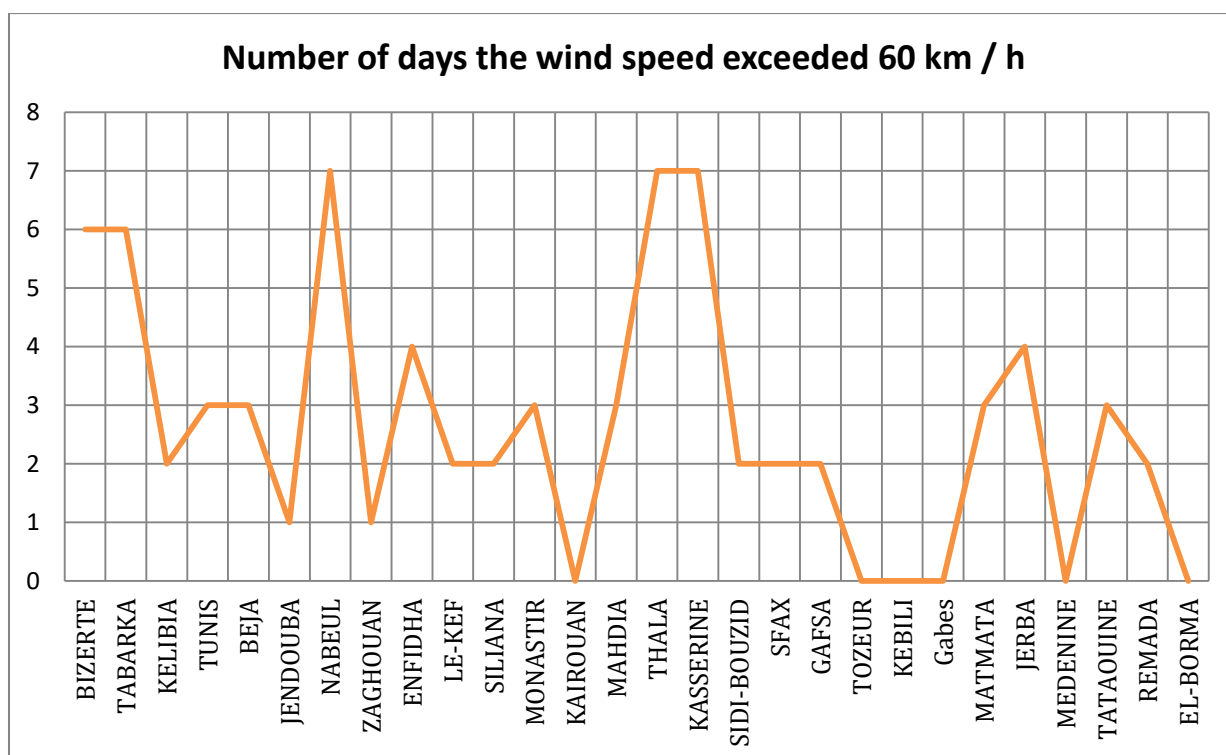


Fig. N°2