

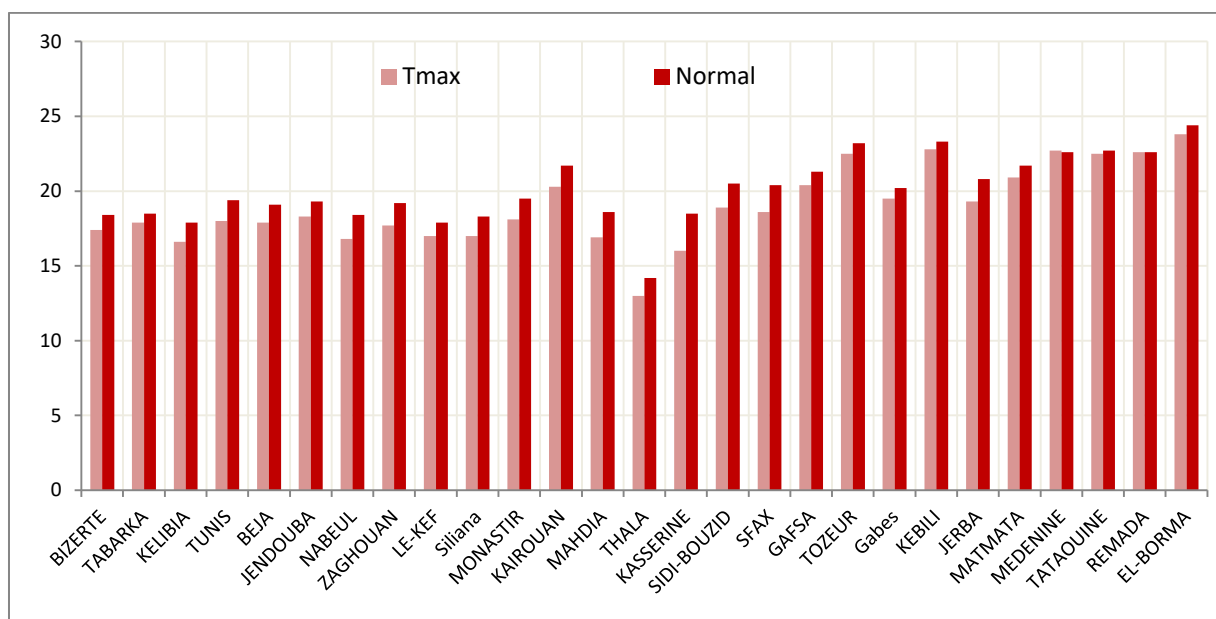
Monthly Climatological Report March 2022

March 2022 was marked by a shift between stability in weather factors on some days and the passage of weather fluctuations of varying effectiveness on other days. The precipitation varied geographically, and the monthly total witnessed an excess in many regions. The total for the month (27 main stations) reached 1110.3 millimeters, while the reference total (1991 - 2020) for the same stations was 935.4 millimeters, and therefore the surplus was in the range of 19%.

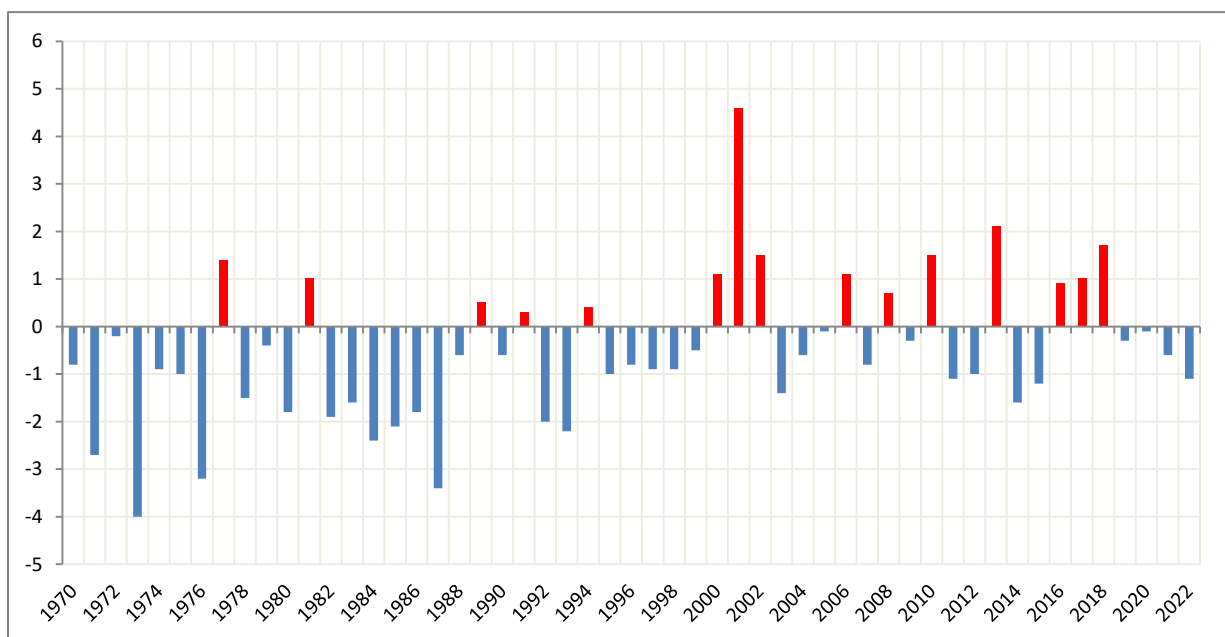
As for the temperature, it witnessed a relatively low, with the overall average (27 major stations) of the average temperature being 14.4°C and it was lower than the reference rates (14.6 °C) and the difference was (-0.2) °C.

- Maximum temperature:

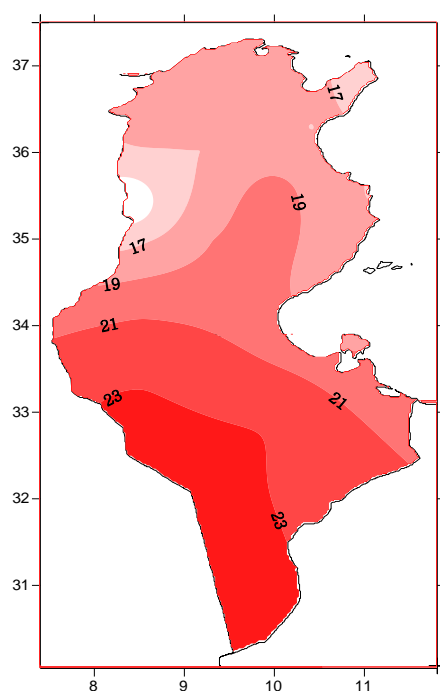
The maximum temperatures ranged from 13°C in Thala to 23.8°C in El Borma, and were lower than the reference rates in most regions. The differences ranged between (-0.2)°C in Tataouine and (-2.5)°C in Kasserine, with the exception of Medenine, where it was slightly above the average and the difference was (+0.1)°C. The absolute maximum temperature reached 36.5°C on March 30, 2022. The general average maximum temperature was 19°C and was lower than the reference average (20.1°C) with a difference of (-1.1)°C.



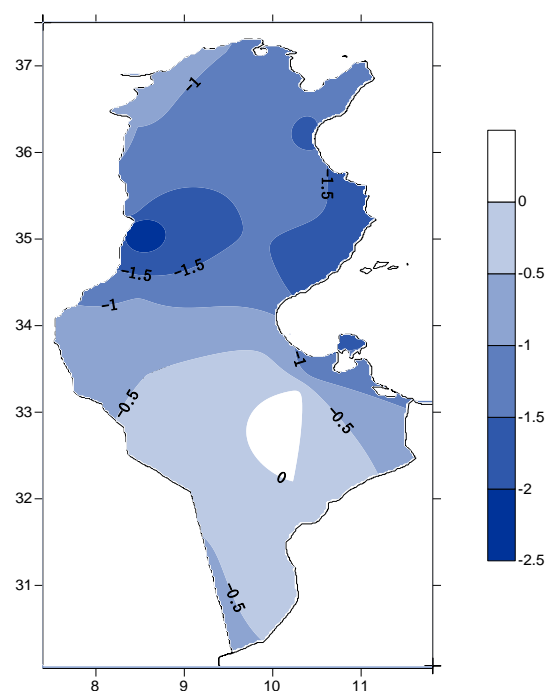
Comparison of maximum and normal temperatures for the month of March



Deviation from normal (1991-2020) maximum temperatures
since 1970: Month of March



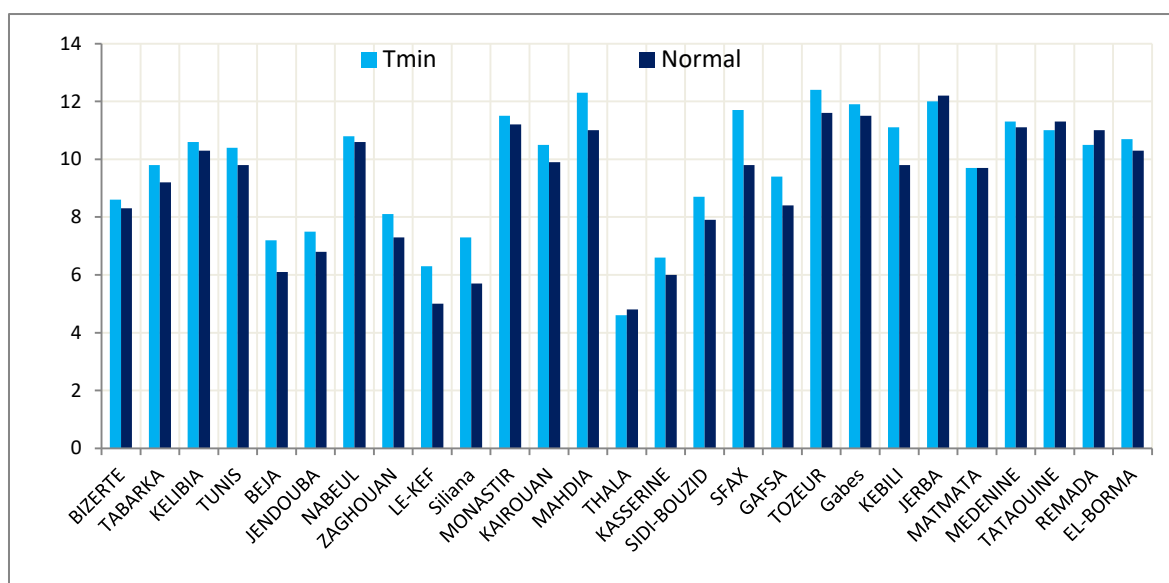
Maximum temperature in (°C)



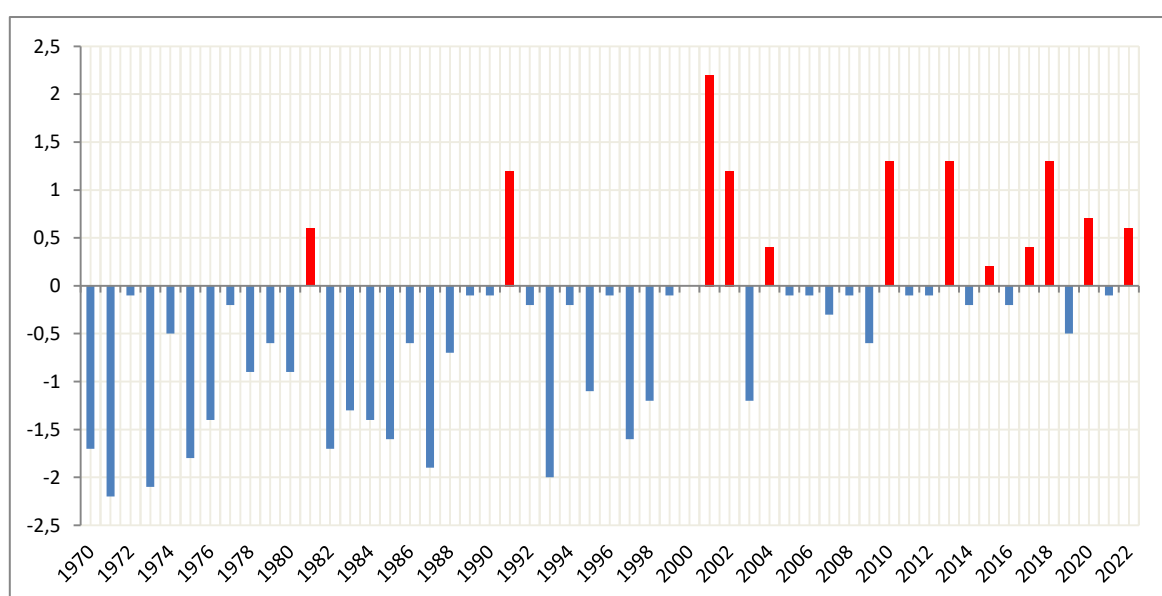
Deviation from normal of Tmax in (°C)

- Minimum temperature:

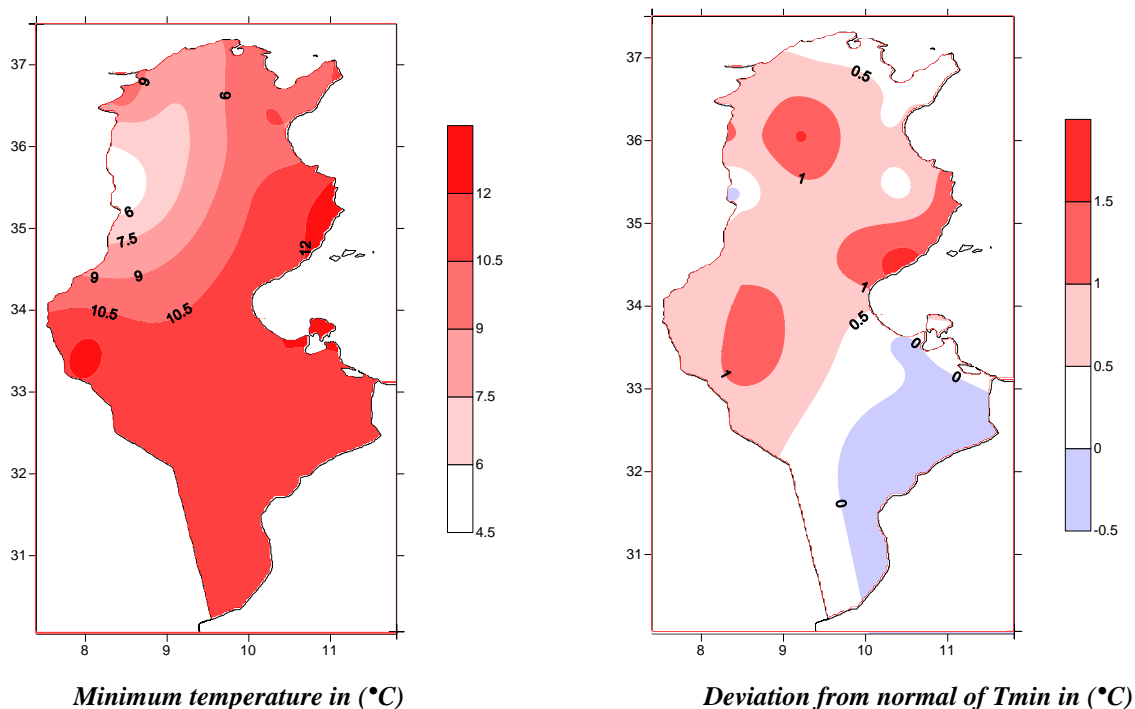
The minimum temperatures ranged between 4.6° in Thala and 12.4°C in Tozeur and were above the reference rates in most regions. The differences varied from (+0.2)°C in Medenine to (+1.9)°C in Sfax, except for Thala, Djerba, Tataouine and Remada, where the rates were slightly lower than the reference rates and ranged between (-0.2)°C in Thala and Djerba and (-0.5)°C in Ramada. The absolute minimum temperature reached (-0.4)°C in Thala on March 01, 2022. The general average minimum temperature reached 9.7°C and exceeded the reference average (9.1°C) by a difference of (+0.6) °C.



Comparison of minimum and normal temperatures for the month of March

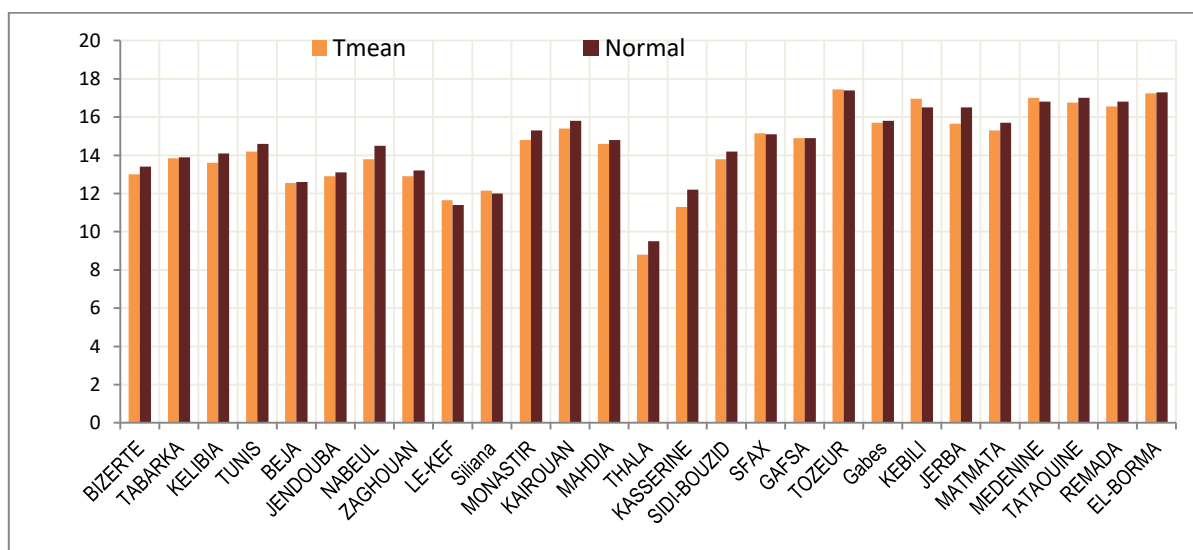


Deviation from the (1991-2020) normal of minimum temperatures since 1970: Month of March

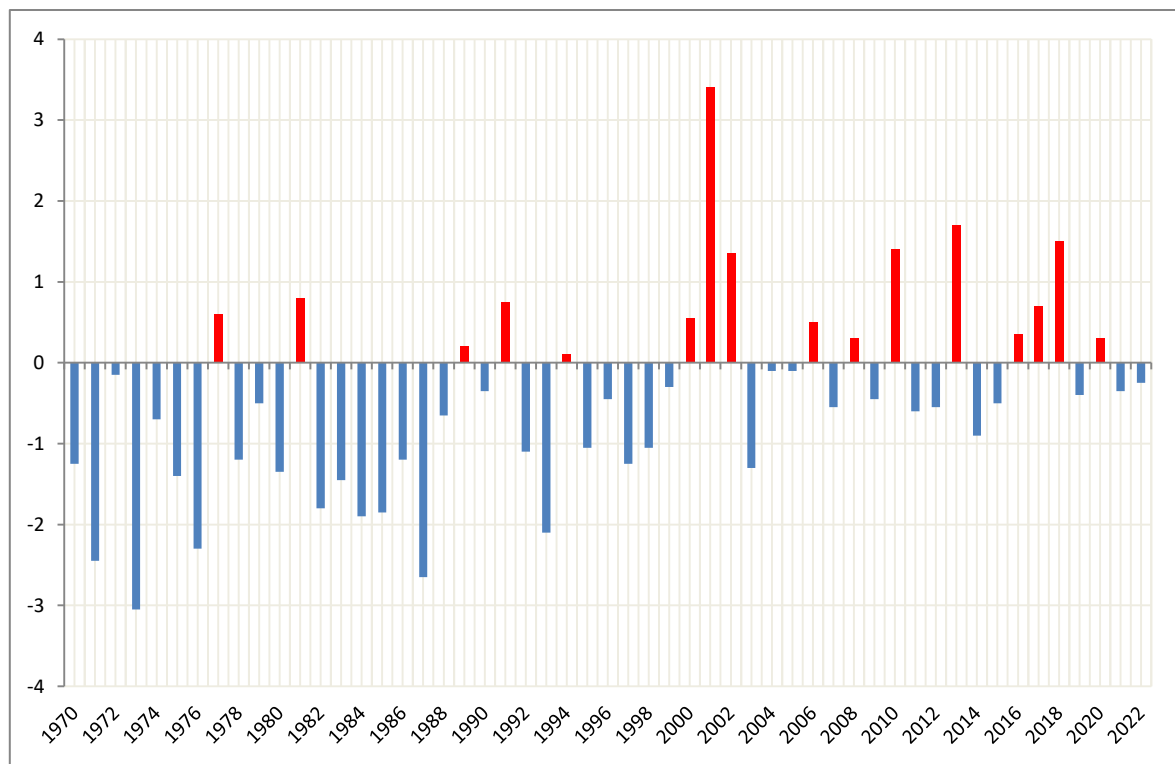


Mean temperature :

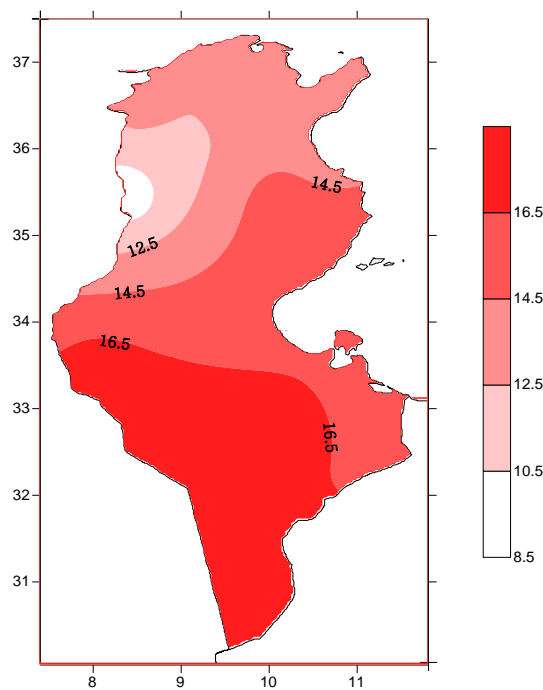
As for the average temperatures, they ranged between 8.8°C in Thala and 17.3°C in the whole, and they were lower than the reference rates (1991-2020) in most regions, and the differences were from (-0.1)°C in Tabarka to (-0.9)°C in Kasserine, with the exception of Kef, Siliana, Sfax, Tozeur and Kebli and Medenine, where they were slightly above the averages, and the differences ranged between (+0.1)°C in Sfax and Tozeur to (+0.4)°C in Kebli. As for the general average of the average temperature, it reached 14.4°C and was slightly lower than the reference average (14.6°C) and the difference was (-0.2)°C.



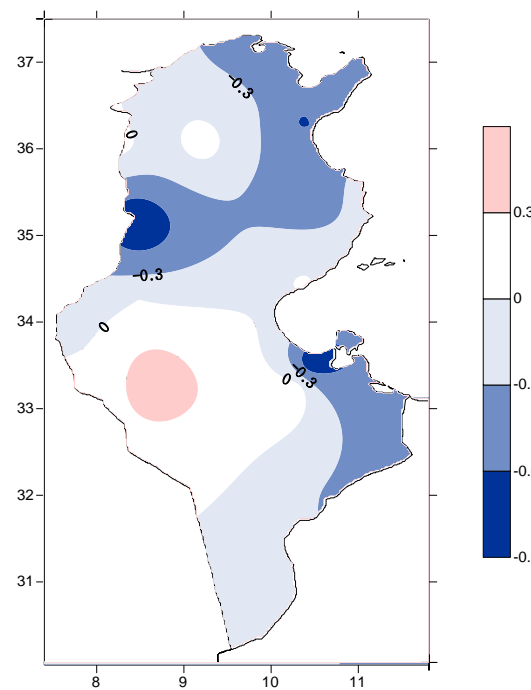
Comparison of mean and normal temperatures for the month of March



**Deviation from the(1991-2020) normal of mean temperatures
since 1970 : Month of March**



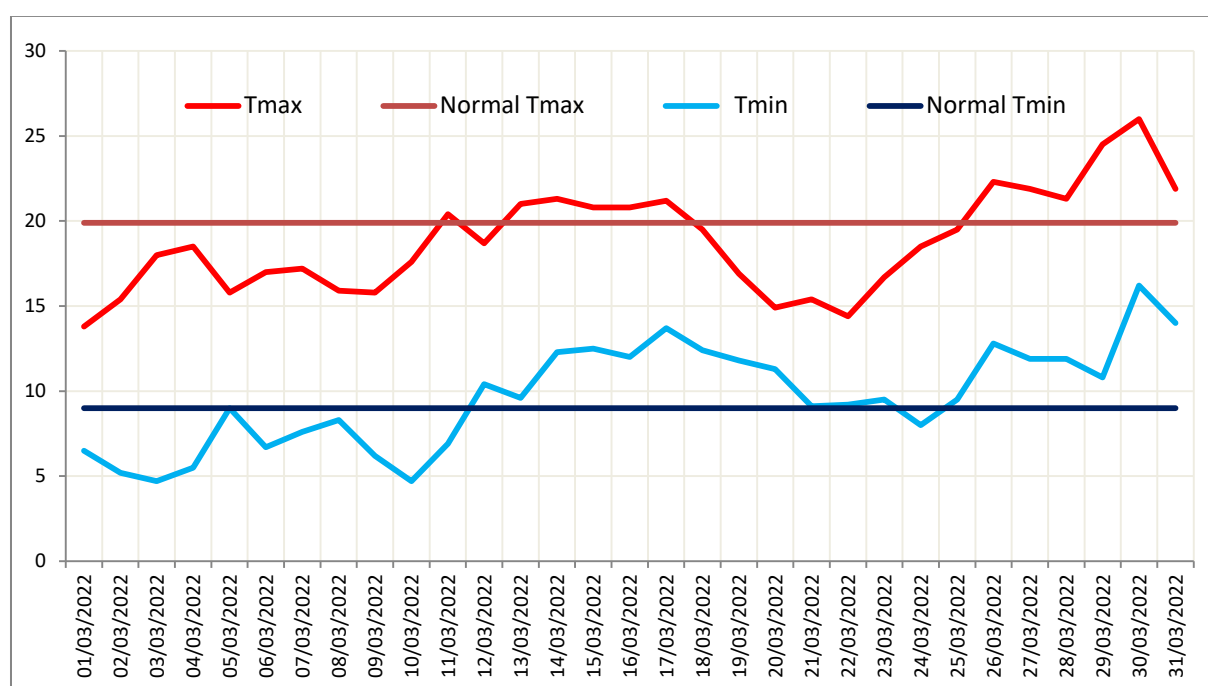
Average mean temperature (°C)



(mean T) 's deviation from normal (°C)

Evolution of daily temperatures compared to normal for the month of March :

The beginning of March 2022 was marked by low temperatures that were below the reference rates. During the period from 12 to 18 March, the minimum and maximum temperatures increased and exceeded the reference rates. During the period from 19 to 25 March, our country experienced weather fluctuations that caused a relative drop in temperatures. From March 26 to March 30, the temperatures rose and exceeded the reference rates, and then the temperatures fell on the last day of the month.



Rainfall:

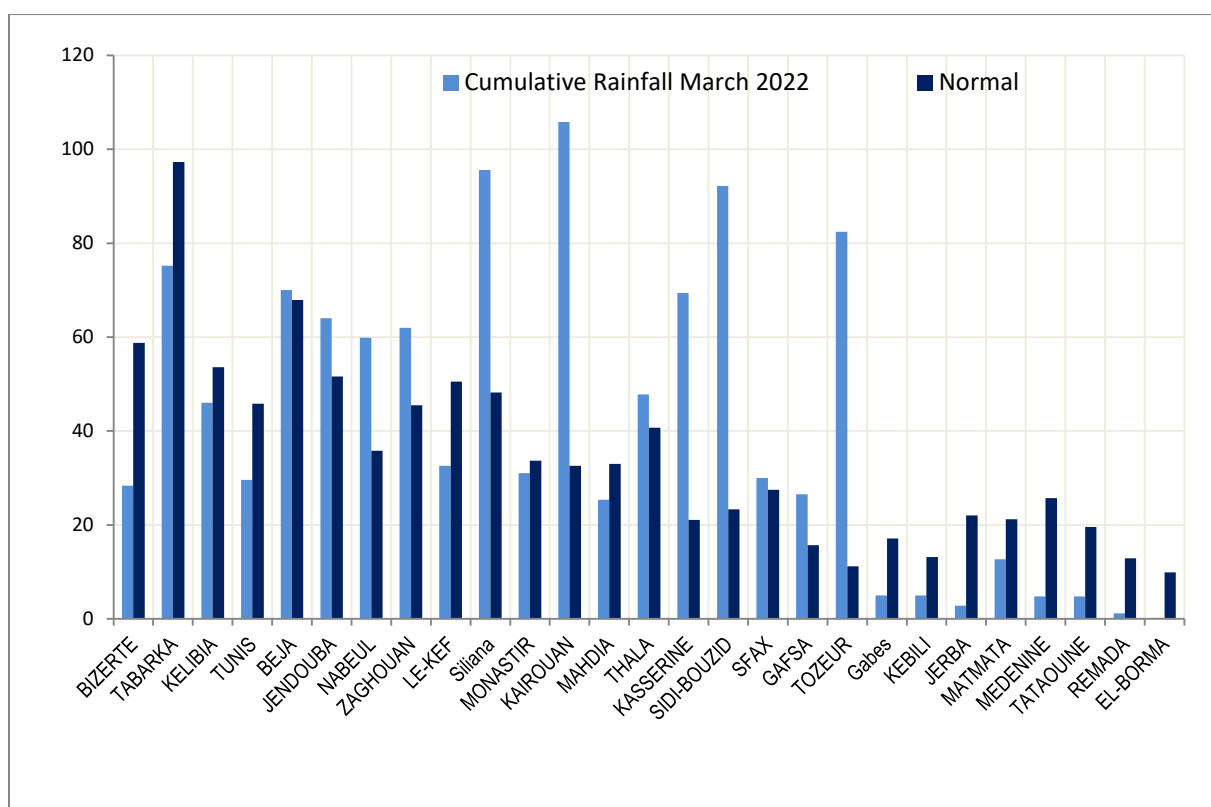
As for the amount of rain in March 2022, it was geographically uneven, and the total balance for the month (27 main stations) amounted to 1110.3 millimeters, while the reference rate (1991-2020) for the same stations was 935.4 millimeters, which is equivalent to 118.7 %, and the percentage of the surplus was within 19 %.

Significant amounts of rain fell on March 19 and the daily total reached a maximum of 37 mm in Zaghuan, 39 mm in Jendouba, 42 mm in Beja, 61 mm in Sidi Bouzid, 70 mm in Siliana, 79 mm in Tozeur and 92 mm in Kairouan. Record numbers were recorded at the level of the daily total of rain in Kairouan and Tozeur:

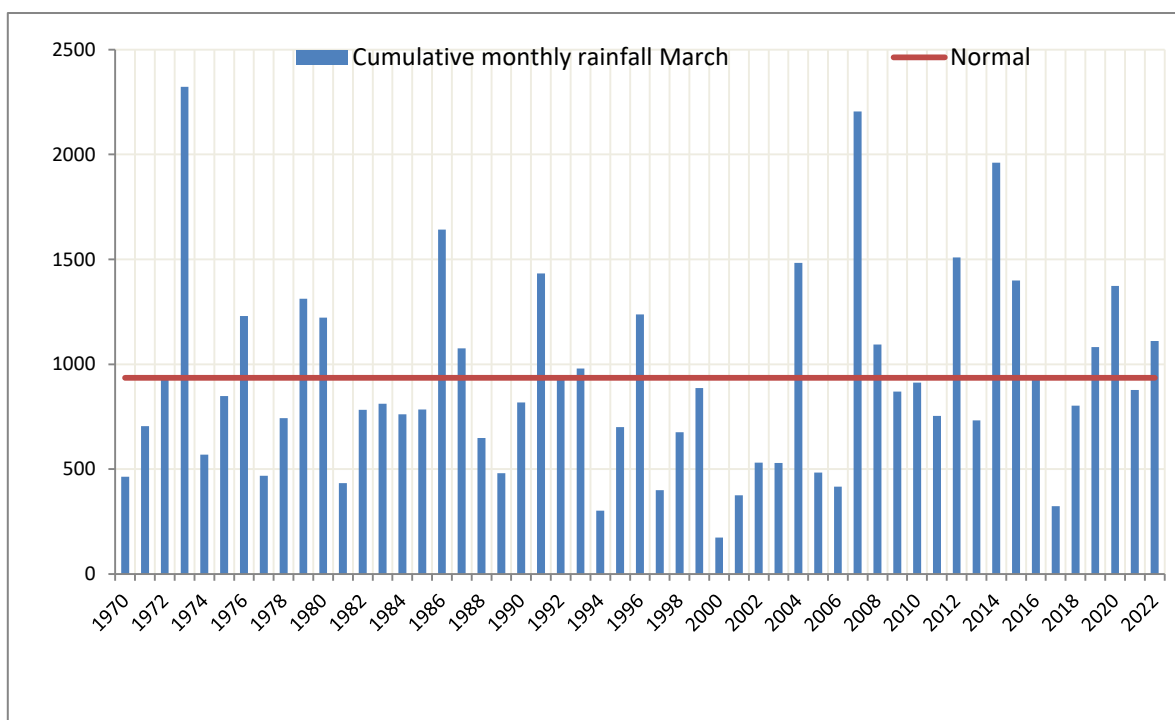
station	New record Total daily rain (mm)	Date	Old record Total daily rain (mm)	Date
Kairouan	91,6	03/19/2022	76.6	03/15/1991
Tozeur	78,6	03/19/2022	25.7	03/26/1993

As for the monthly total, new records were set in Kasserine and Tozeur:

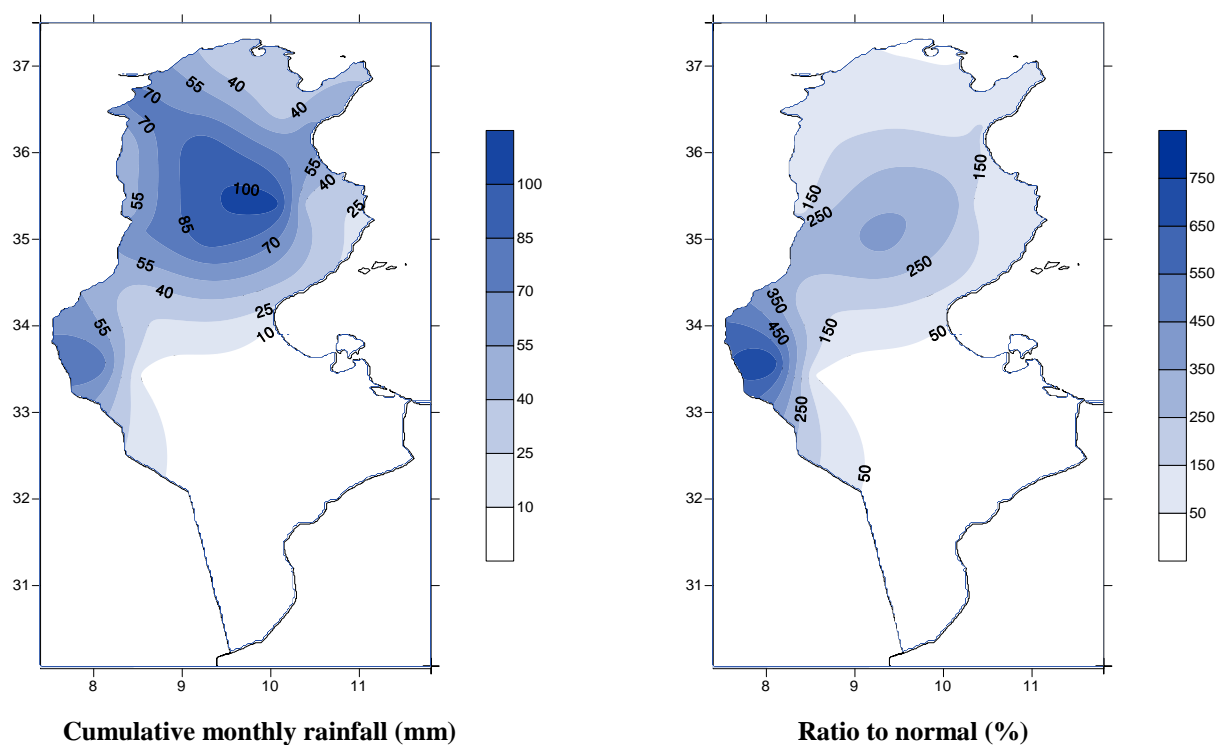
station	New record Total Monthly rain (mm)	Date	Old record Total Monthly rain (mm)	Date
Kasserine	69.4	03/19/2022	63.6	1991
Tozeur	82.4	03/19/2022	56.3	1953



Comparison of monthly rainfall totals withto the reference normals of the accumulations



Cumulative monthly rainfall since 1970 in Tunisia: Month of March





- The winds :

This month of March was very windy with peak speeds that exceeded 100 km/h in four stations and a speed of 122.4 km/h was reached on the 31st of the month in Thala station.

Indeed, the winds blew strongly during the period from March 14 to 20, 2022 in most regions. Maximum speeds varied from 58 km/h in Tunis to 83 km/h in Nabeul.

The wind speed also increased during the period from March 24 to 26 in the southern regions and generated sand phenomena and the maximum speeds were between 60 km/h in Djerba and 94 km/h in Tozeur.

The winds were also strong on March 30 and 31 in the northwest and in the central and southern regions, where the maximum speed varied from 61 km/h in Kef to 97 km/h in Sfax and Tozeur. It was locally strong on March 30. , with a maximum speed of 101 km/h in Enfidha, 104 km/h in Matmata and 112 km/h in Monastir, as well as on March 31, 2022 when 122 km/h was recorded in Thala.

(Figure no. 01 and Figure no. 02):



Figure N° 01

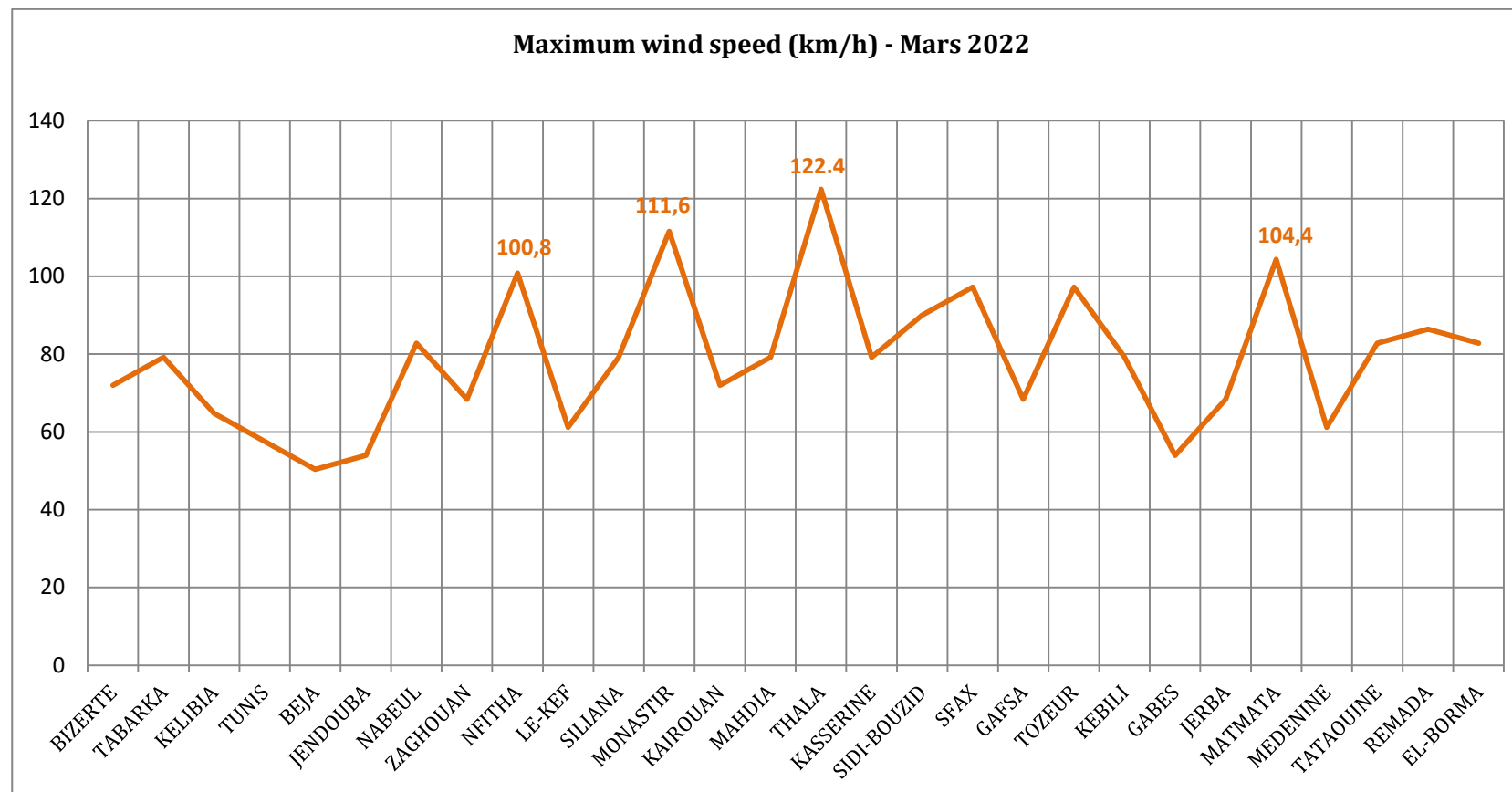




Figure N° 02

