

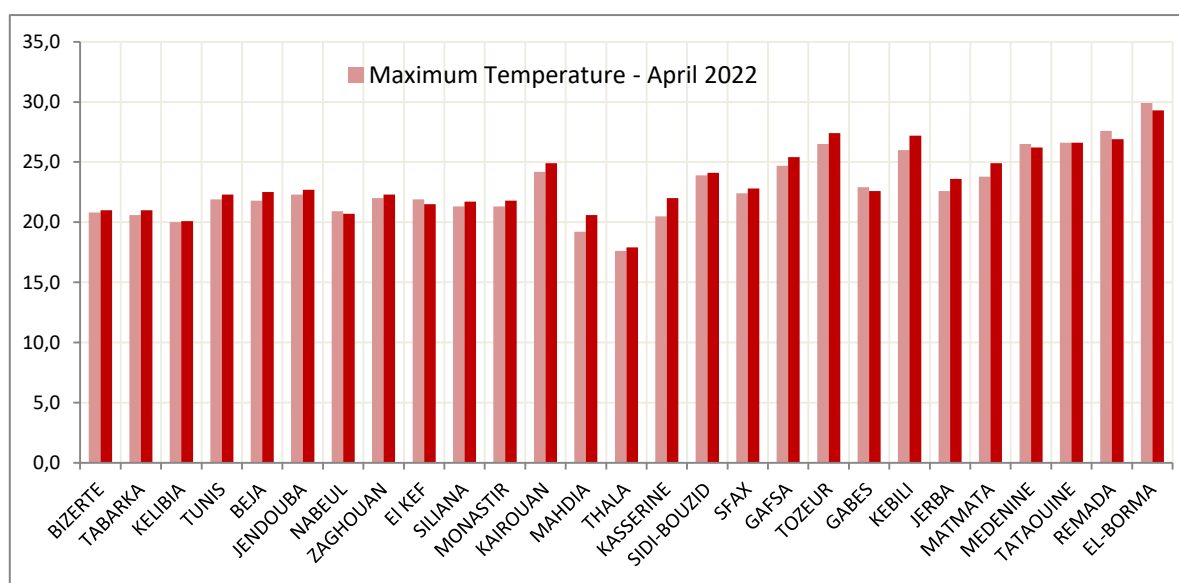
Monthly Climatological Report April 2022

April 2022 was mostly stable due to the presence of high pressure on our country. However, some weather fluctuations of limited effectiveness covered our areas on some days and contributed to the descent of scattered rain in weak to medium quantities. The total decrease (27 main stations) in rain reached **60%**, which made April 2022 classified as the **seventh driest month of April since 1970**.

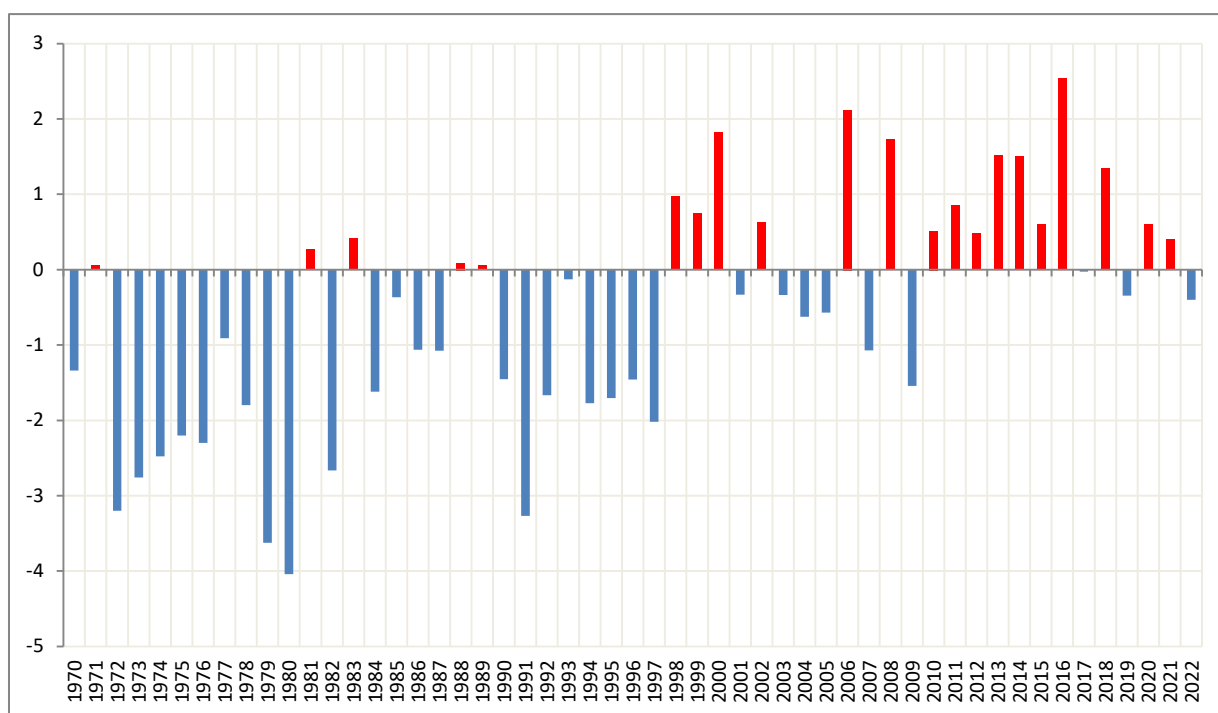
As for the temperatures, they were generally within the reference rates. The general average (27 main stations) of the average temperature was 17.7 degrees, and it was slightly above the reference rate (17.6 degrees), with a slight difference of (+0.1) degrees.

- Maximum temperature:

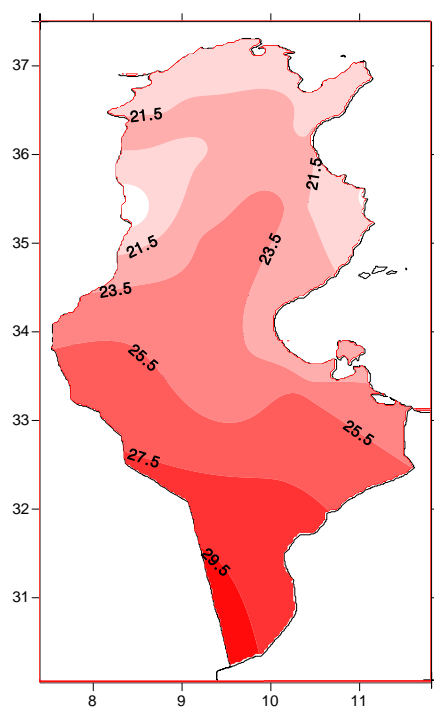
The maximum temperatures ranged from 17.6 degrees in Thala to 29.9 degrees in El Borma, and they were lower than the reference rates in most regions. The differences ranged between (-0.1) degrees in Kelibia and (-1.4) degrees in Mahdia, except for Nabeul, El Kef, Gabes, Medenine and Remada, where the rates were slightly above the reference rates and ranged the differences between (+0.2) degrees in Nabeul and (+0.7) degrees in Ramada. The absolute maximum temperature reached **37.3 degrees** on April 04, 2022. The general average maximum temperature was 22.9 degrees and was lower than the reference average (23.3 degrees) with a difference of (-0.4) degrees.



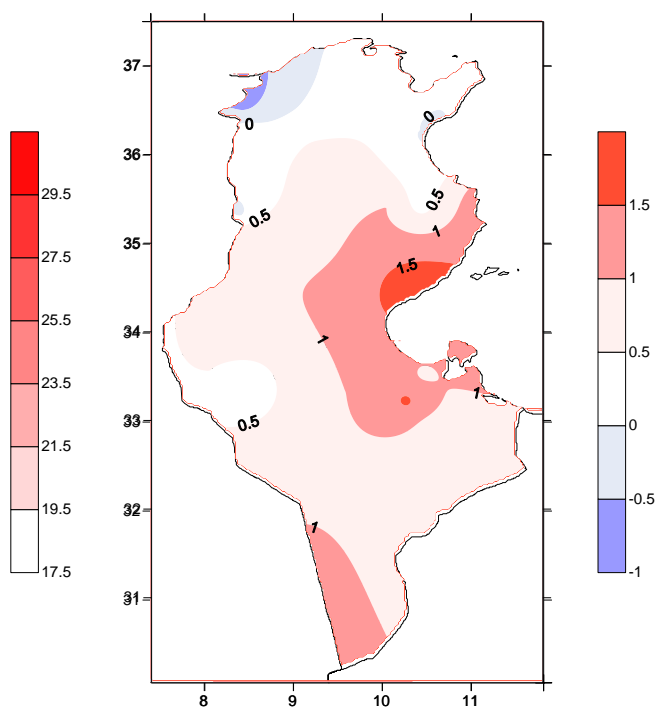
Comparison of maximum and normal temperatures for the month of April



**Deviation from normal (1991-2020) maximum temperatures
since 1970: Month of April**



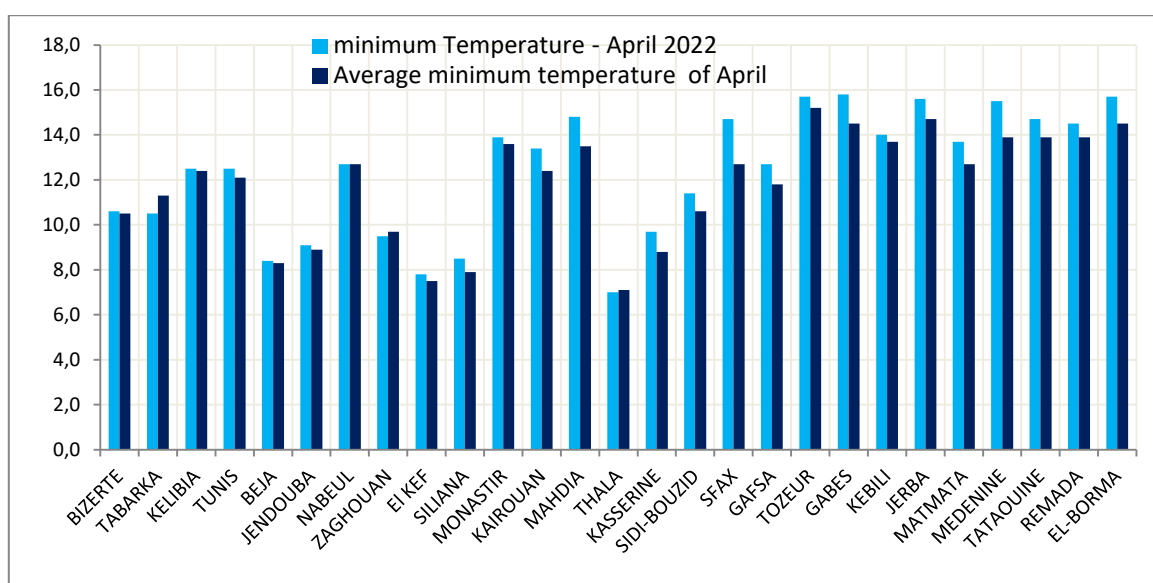
Maximum temperature in (°C)



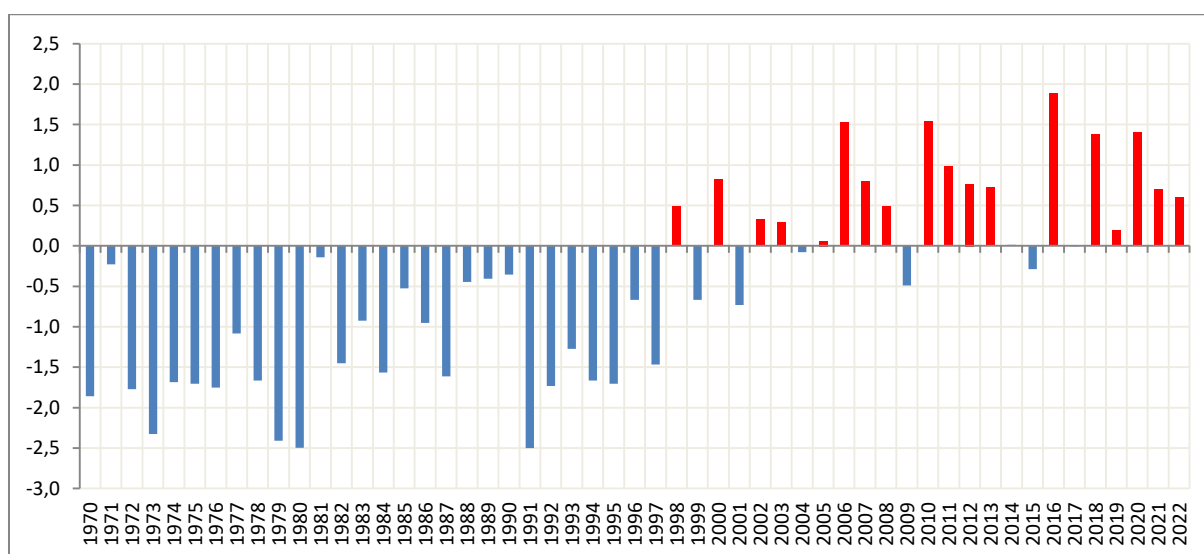
Deviation from normal of Tmax in (°C)

- Minimum temperature:

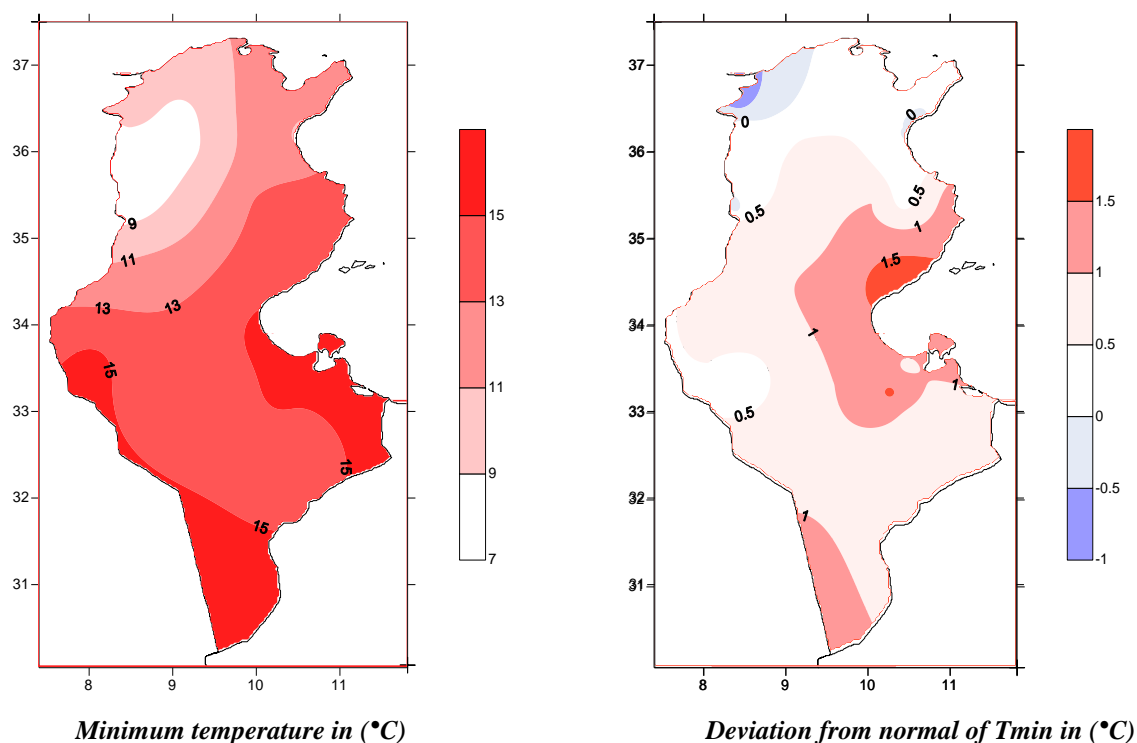
The minimum temperature averages ranged between 7.0 degrees in Thala and 15.8 degrees in Gabes, and they were above the reference rates in most regions. The differences ranged from (+0.1) degrees in Bizerte to (+2.0) degrees in Sfax, with the exception of Tabarka, Zaghouan and Tala, where the rates were slightly lower than the reference rates, and the differences ranged between (-0.1) degrees in Thala and (-0.8) degrees in Tabarka. The absolute minimum temperature reached (-0.1) degrees in kef on 03 April 2022. The general average minimum temperature reached 12.4 degrees, and it exceeded the reference average (11.8 degrees) by a difference of (+0.6) degrees.



Comparison of minimum and normal temperatures for the month of April

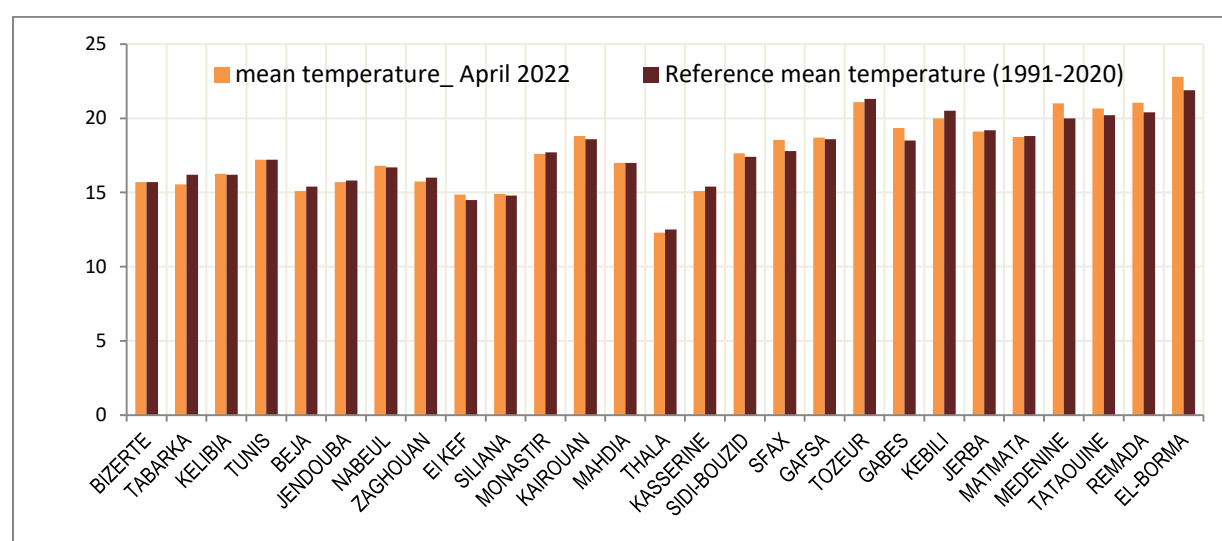


Deviation from the (1991-2020) normal of minimum temperatures since 1970: Month of April

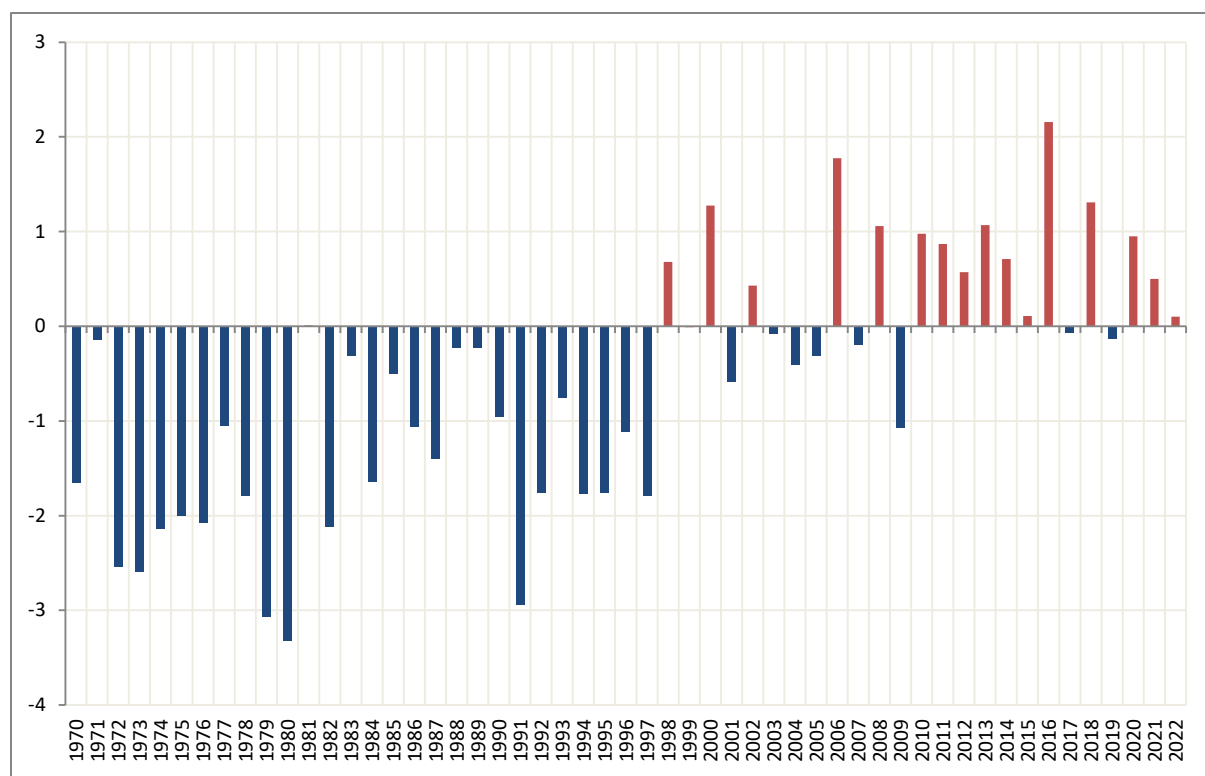


Mean temperature :

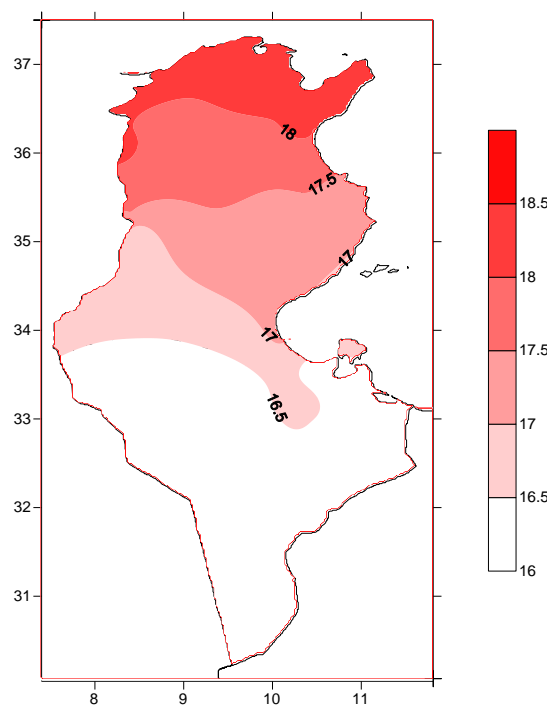
As for the average temperatures, they ranged between 12.3 degrees in Thala and 22.8 degrees in El Borma, and they were above the reference rates (1991-2020) in many stations, and the differences were between (+0.1) degrees in Kelibia and (+1.0) degrees in Medenine, and they were slightly less than the reference rates in Tabarka, Beja, Jendouba, Monastir, Thala, Kasserine, Tozeur Kebili, Matmata and Djerba, where the differences ranged between (-0.1) degrees in Monastir and (-0.6) degrees in Tabarka. As for the general average of the average temperature, it reached 17.7 degrees, and it was slightly above the reference rate (17.6 degrees), with a slight difference of (+0.1) degrees.



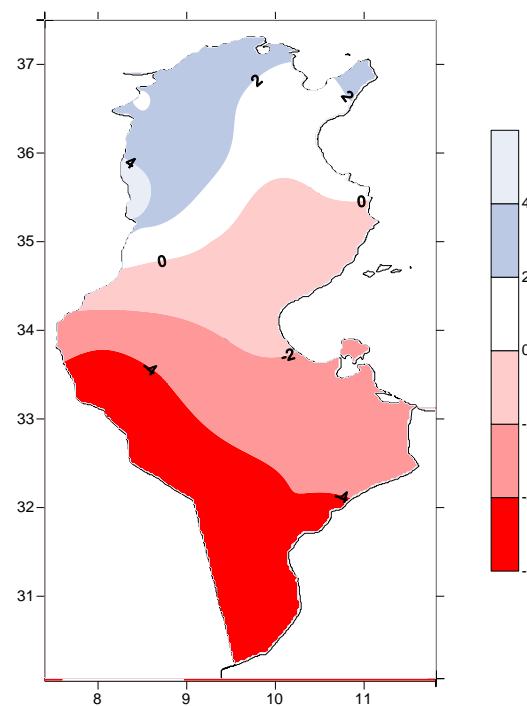
Comparison of mean and normal temperatures for the month of April



Deviation from the(1991-2020) normal of mean temperatures
since 1970 : Month of April



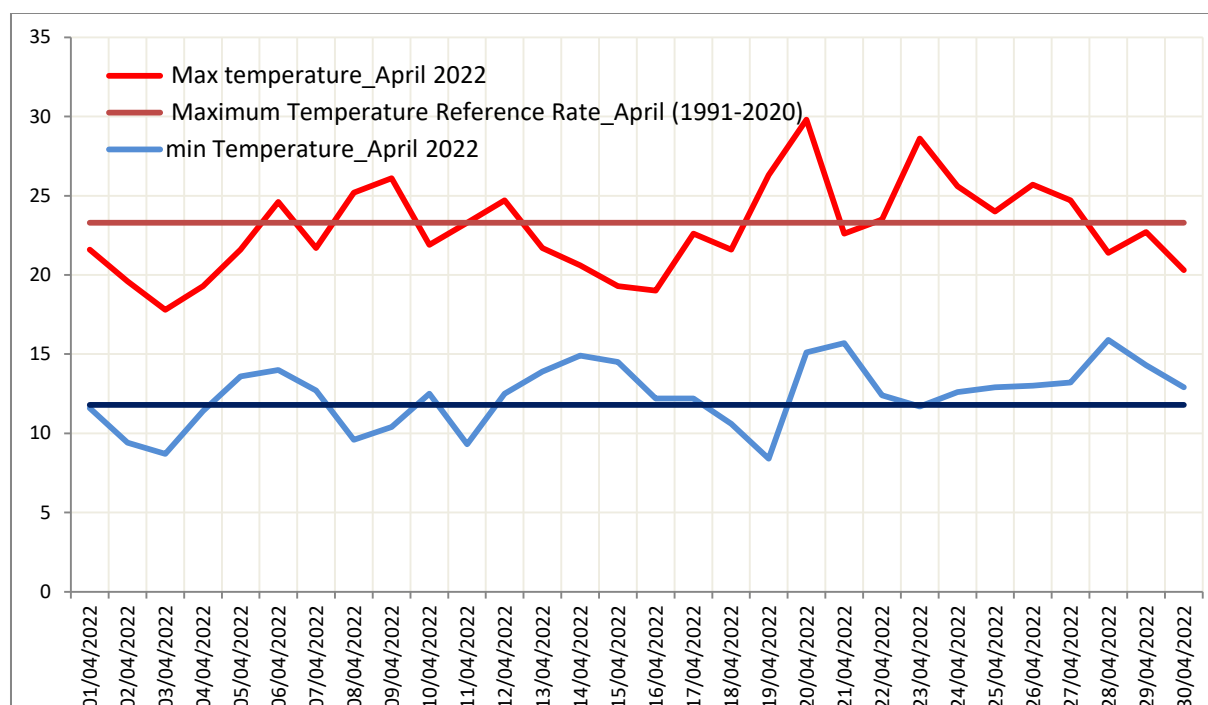
Average mean temperature (°C)



(mean T) 's deviation from normal (°C)

Evolution of daily temperatures compared to normal for the month of April :

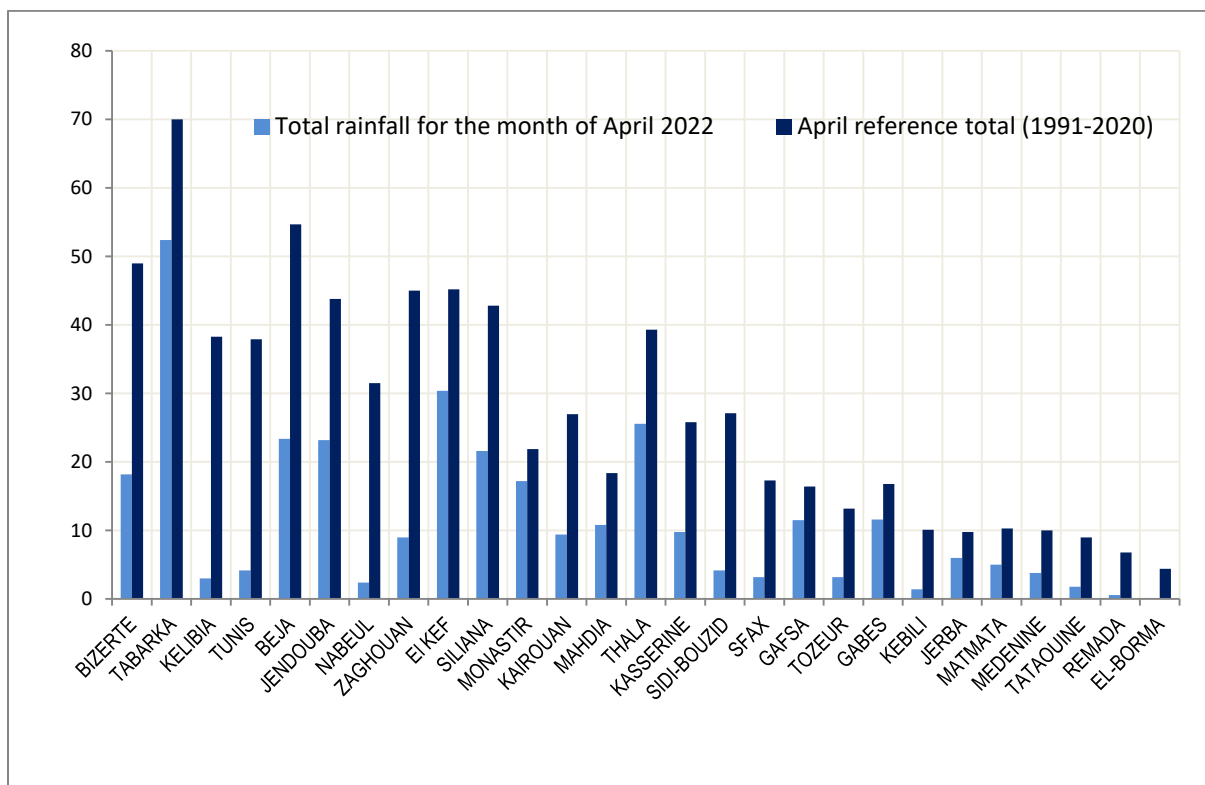
During the month of April, the temperature was often lower than the reference rates, but it witnessed a relative increase during the period from 3 to 6 April in the southern regions, and it also increased during the period from 18 to 21 April in most areas, due to the concentration of an air current from the southern sector on our areas , It also increased during the period from 23 to 25 April 2022. While the lowest temperatures were above the reference rates, except on some days when they were lower than the averages.



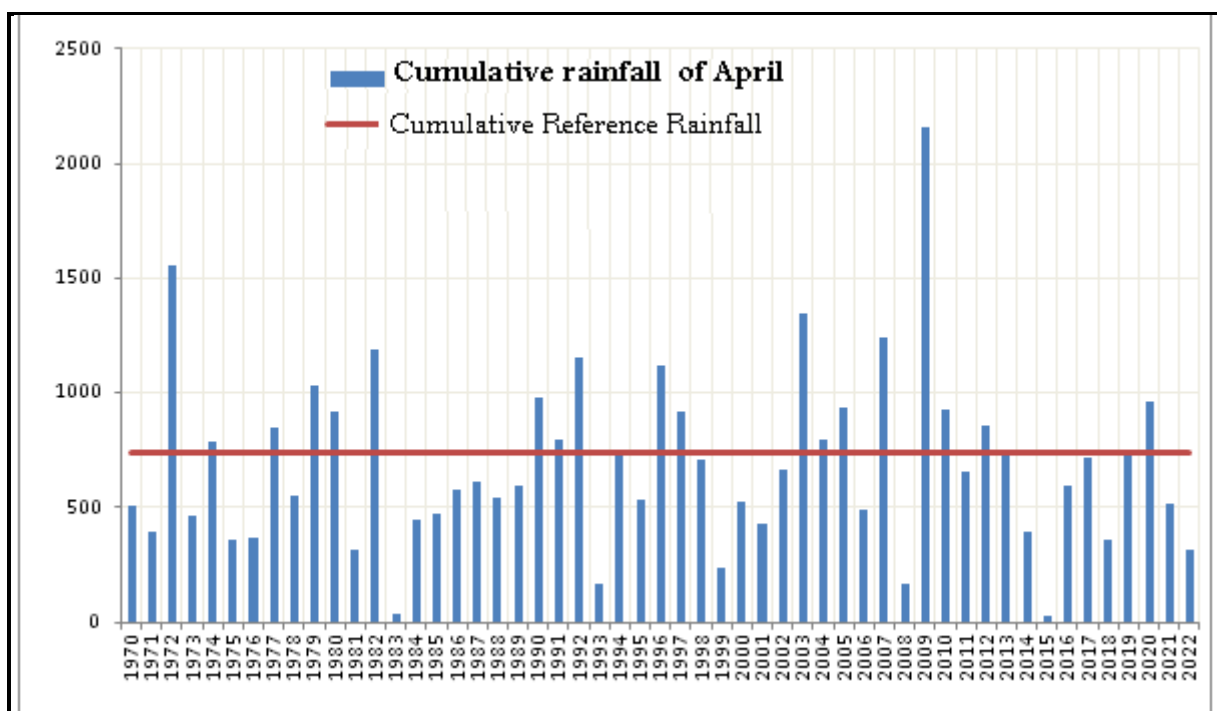
Evolution of daily temperatures compared to normal for the month of April

Rainfall:

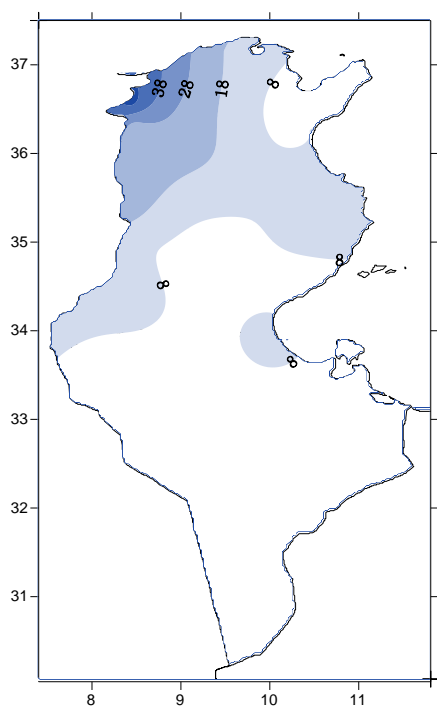
With regard to rain, the total for the month (27 main stations) was 312.9 mm while the reference rate for the same stations was 741.8 mm and the rainfall was geographically uneven, as it was low in the north and little to rare in the south. The decrease in rainfall ranged from 25 % to 100 %. In total, it reached **60 %** during the month of April, and April 2022 was classified as the **seventh driest month** in the months of April since 1970.



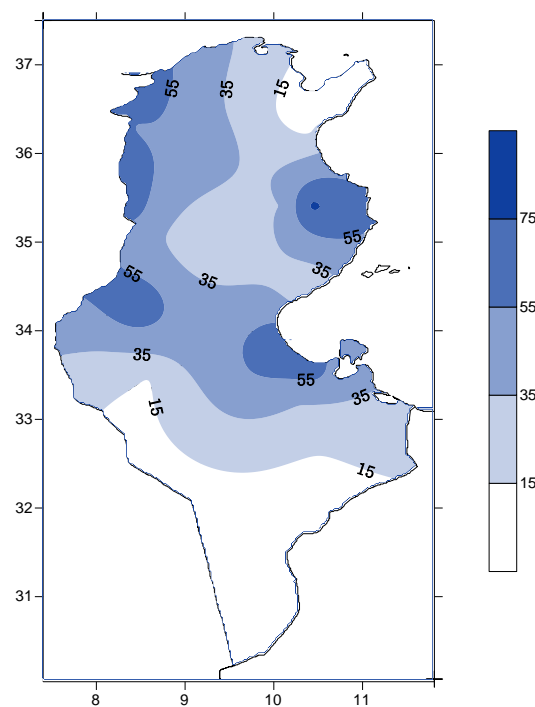
Comparison of monthly rainfall totals with the reference normals of the accumulations April 2022



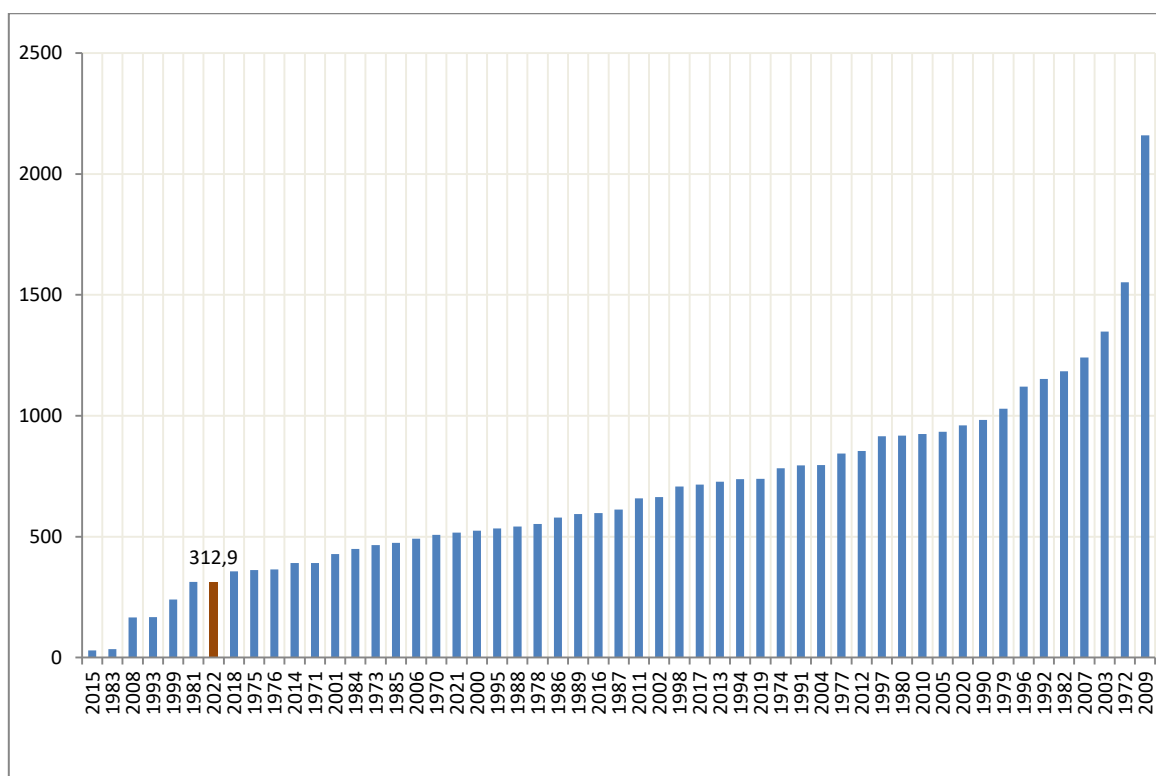
Cumulative monthly rainfall since 1970 in Tunisia: Month of April



Cumulative rainfall (mm)_April 2022



Ratio to normal (%)



Ranking of cumulative rainfall for the month of April since 1970



- The winds :

As for the wind, it was generally weak to moderate, and its speed increased on 01 and 02 April 2022 in the north and southeast regions, where it was dusty and sandy, and its maximum speed ranged from 58 km / h in Kef to 83 km / h in Tabarka.

The wind speed increased during the period from 06 to 08 April in most regions of the north and center, and its maximum speed ranged between 60 km / h in Sidi Bouzid and 68 km / h in Tunis.

The winds were strong during the period from 13 to 17 April in most directions and caused the emergence of sandy roundabouts in the south. The maximum speed ranged from 65 km / h in Sfax and Mahdia to 94 km / h in Zaghouan and Kebili.

The winds were also strong during the period from 20 to 23 April 2022 in the north, center and southwest regions, where they raised dust and sand, and their maximum speed ranged between 60 km / h in Beja and 94 km / h in Jendouba and Tozeur.

(Figure no. 01 and Figure no. 02):



Figure N° 01

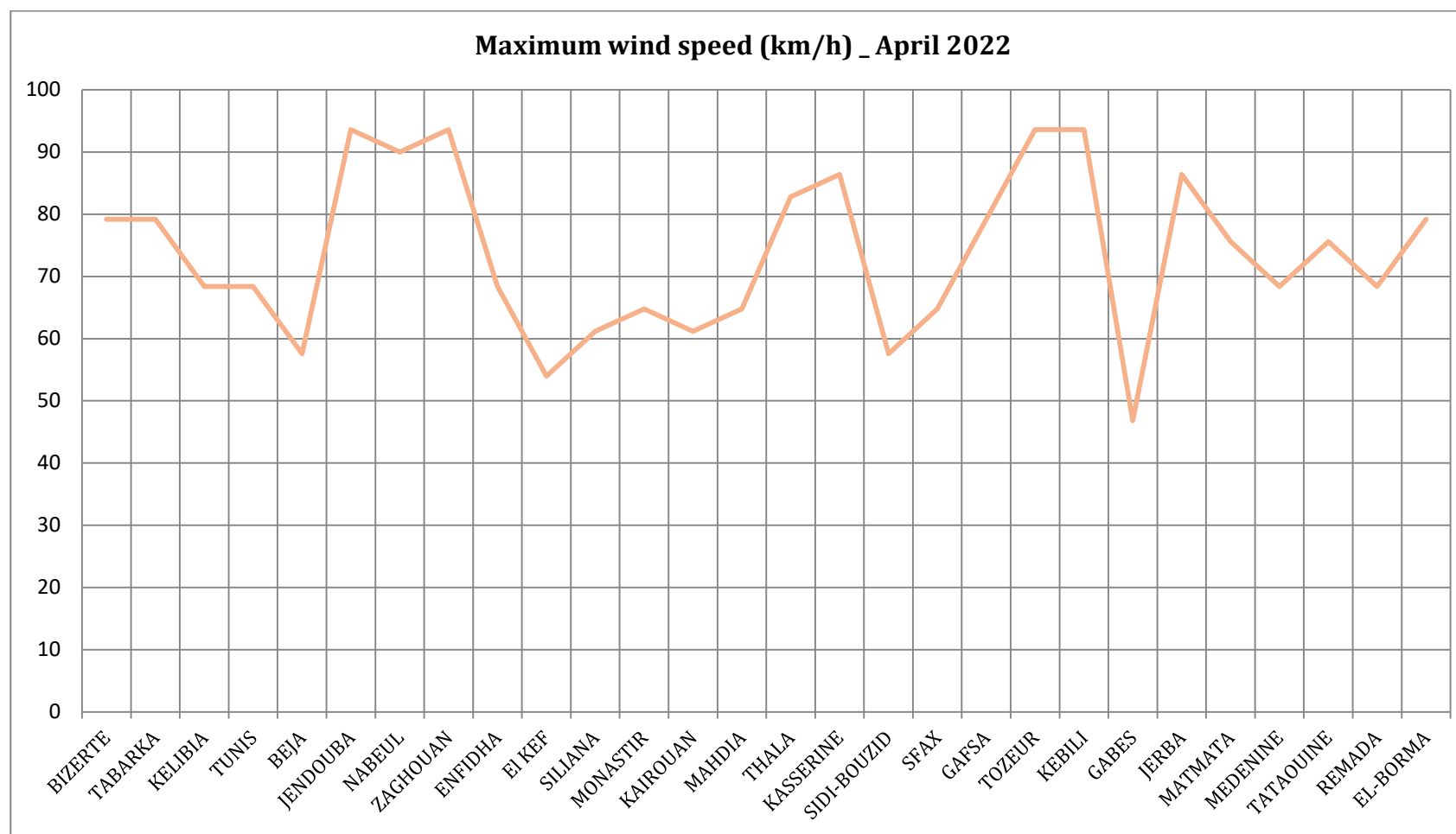




Figure N° 02

